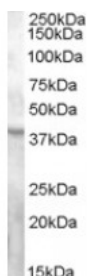




GPR119 Antibody

CATALOG NUMBER: 45-692



Western Blot (0.3ug/ml) staining of Human Ovary lysate (35ug protein in RIPA buffer). Primary incubation was 1 hour. Detected by chemiluminescence.

Specifications

SPECIES REACTIVITY:

TESTED APPLICATIONS:

APPLICATIONS:	ELISA: antibody detection limit dilution 1:2000. Western Blot: Approx. 38kDa band observed in Human Ovary lysates (calculated MW of 36.9kDa according to NP_848566.1). Recommended concentration: 0.3-1ug/ml.
POSITIVE CONTROL:	1) Cat. No. 1316 - Human Ovary Tissue Lysate
IMMUNOGEN:	GPR119 antibody was raised against a 14 amino acid synthetic peptide near the C-Terminus (near) of GPR119.
HOST SPECIES:	Goat

Properties

PURIFICATION:	GPR119 antibody was purified from goat serum by ammonium sulphate precipitation followed by antigen affinity chromatography using the immunizing peptide.
PHYSICAL STATE:	Liquid
BUFFER:	GPR119 antibody is supplied in Tris saline, 0.02% sodium azide, pH 7.3 with 0.5% bovine serum albumin.
CONCENTRATION:	500 ug/mL
STORAGE CONDITIONS:	Aliquot and store at -20°C. Minimize freezing and thawing.
CLONALITY:	Polyclonal
CONJUGATE:	Unconjugated

Additional Info

ALTERNATE NAMES:	GPR119, G protein-coupled receptor 119, RP1-2013.4, GPCR2N: MGC119957N: hGPCR2, G-protein coupled receptor 2, GPCR2
ACCESSION NO.:	NP_848566.1
PROTEIN GI NO.:	30425400
OFFICIAL SYMBOL:	GPR119
GENE ID:	139760

Background

REFERENCES: 1) Overton HA, Fyfe MC, Reynet C. GPR119, a novel G protein-coupled receptor target for the treatment of type 2 diabetes and obesity. Br J Pharmacol. 2007 Nov 26;

FOR RESEARCH USE ONLY

December 13, 2016