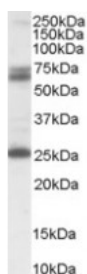




GAD65 Antibody

CATALOG NUMBER: 45-648



Western Blot (0.3ug/ml) staining of Human Hippocampus lysate (35ug protein in RIPA buffer). Primary incubation was 1 hour. Detected by chemiluminescence.

Specifications

SPECIES REACTIVITY:	Human
TESTED APPLICATIONS:	ELISA, WB
APPLICATIONS:	ELISA: antibody detection limit dilution 1:32000. Western Blot: Approx 65+70kDa bands observed in Human Brain lysates. An additional band of 26kDa is observed. All bands were blocked by the immunising peptide (calculated MW of 65.4kDa according to NP_000809.1). Recommended concentration: 0.1-0.3ug/ml.
POSITIVE CONTROL:	1) Cat. No. 1303 - Human Brain Tissue Lysate
SPECIFICITY:	This antibody is expected to recognise both reported variants.
IMMUNOGEN:	GAD65 antibody was raised against a 14 amino acid synthetic peptide near the internal region of GAD65.
HOST SPECIES:	Goat

Properties

PURIFICATION:	GAD65 antibody was purified from goat serum by ammonium sulphate precipitation followed by antigen affinity chromatography using the immunizing peptide.
PHYSICAL STATE:	Liquid
BUFFER:	GAD65 antibody is supplied in Tris saline, 0.02% sodium azide, pH 7.3 with 0.5% bovine serum albumin.
CONCENTRATION:	500 ug/mL
STORAGE CONDITIONS:	Aliquot and store at -20°C. Minimize freezing and thawing.
CLONALITY:	Polyclonal
CONJUGATE:	Unconjugated

Additional Info

ALTERNATE NAMES:	GAD2, GAD65, glutamate decarboxylase 2 (pancreatic islets and brain, 65 kDa), Glutamate decarboxylase-2 (pancreas), 65kD
ACCESSION NO.:	NP_000809.1
PROTEIN GI NO.:	4503875

OFFICIAL SYMBOL: GAD2

GENE ID: 2572

Background

REFERENCES: 1) Meyre D, Boutin P, Tounian A, Deweirder M, Aout M, Jouret B, Heude B, Weill J, Tauber M, Tounian P, Froguel P. Is Glutamate Decarboxylase 2 (GAD2) a genetic link between low birth weight and subsequent development of obesity in children? J Clin Endocrinol Metab. 2005 Jan 25;

FOR RESEARCH USE ONLY

December 13, 2016