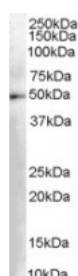




DOPA decarboxylase Antibody

CATALOG NUMBER: 45-492



Western Blot (0.03ug/ml) staining of Human Kidney lysate (35ug protein in RIPA buffer). Primary incubation was 1 hour. Detected by chemiluminescence.

Specifications

SPECIES REACTIVITY:	Human
TESTED APPLICATIONS:	ELISA, WB
APPLICATIONS:	ELISA: antibody detection limit dilution 1:8000. Western Blot: Approx 50kDa band observed in Human Kidney lysates and 48kDa on Human Brain lysates (calculated MW of 53.9kDa according to NP_000781.1). Recommended concentration: 0.03-0.1ug/ml.
POSITIVE CONTROL:	1) Cat. No. 1305 - Human Kidney Tissue Lysate
SPECIFICITY:	This antibody is expected to recognise isoforms 1, 2, 3, 4 and 5 (NP_000781.1; NP_001229815.1; NP_001229816.1; NP_001229817.1; NP_001229818.1 respectively). Reported variants represent identical protein (NP_000781.1; NP_001076440.1).
IMMUNOGEN:	DOPA decarboxylase antibody was raised against a 12 amino acid synthetic peptide near the C-Terminus of DOPA decarboxylase.
HOST SPECIES:	Goat

Properties

PURIFICATION:	DOPA decarboxylase antibody was purified from goat serum by ammonium sulphate precipitation followed by antigen affinity chromatography using the immunizing peptide.
PHYSICAL STATE:	Liquid
BUFFER:	DOPA decarboxylase antibody is supplied in Tris saline, 0.02% sodium azide, pH 7.3 with 0.5% bovine serum albumin.
CONCENTRATION:	500 ug/mL
STORAGE CONDITIONS:	Aliquot and store at -20°C. Minimize freezing and thawing.
CLONALITY:	Polyclonal
CONJUGATE:	Unconjugated

Additional Info

ALTERNATE NAMES: DDC, dopa decarboxylase (aromatic L-amino acid decarboxylase), HGNC:2719, AADC, aromatic L-amino acid

decarboxylase

ACCESSION NO.: NP_000781.1

PROTEIN GI NO.: 4503281

OFFICIAL SYMBOL: DDC

GENE ID: 1644

Background

REFERENCES: 1) Voeller KK. Attention-deficit hyperactivity disorder (ADHD). J Child Neurol. 2004 Oct;19(10):798-814. Review.

FOR RESEARCH USE ONLY

December 13, 2016