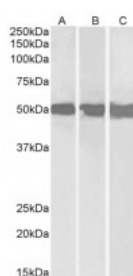




## DEAD-box protein 6 Antibody

CATALOG NUMBER: 45-471



Western Blot (0.3ug/ml) staining of Daudi (A), Jurkat (B) and HepG2 (C) lysates (35ug protein in RIPA buffer). Primary incubation was 1 hour. Detected by chemiluminescence.

### Specifications

<b>SPECIES REACTIVITY:</b>	Human
<b>TESTED APPLICATIONS:</b>	ELISA, WB
<b>APPLICATIONS:</b>	ELISA: antibody detection limit dilution 1:128000. Western Blot: Approx 50kDa band observed in lysates of cell lines Daudi, Jurkat and HepG2 (calculated MW of 53.2kDa according to NP_004388.1). Recommended concentration: 0.3-1ug/ml.
<b>POSITIVE CONTROL:</b>	1) Cat. No. 1205 - Jurkat Cell Lysate
<b>IMMUNOGEN:</b>	DEAD-box protein 6 antibody was raised against a 13 amino acid synthetic peptide near the C-Terminus of DEAD-box protein 6.
<b>HOST SPECIES:</b>	Goat

### Properties

<b>PURIFICATION:</b>	DEAD-box protein 6 antibody was purified from goat serum by ammonium sulphate precipitation followed by antigen affinity chromatography using the immunizing peptide.
<b>PHYSICAL STATE:</b>	Liquid
<b>BUFFER:</b>	DEAD-box protein 6 antibody is supplied in Tris saline, 0.02% sodium azide, pH 7.3 with 0.5% bovine serum albumin.
<b>CONCENTRATION:</b>	500 ug/mL
<b>STORAGE CONDITIONS:</b>	Aliquot and store at -20°C. Minimize freezing and thawing.
<b>CLONALITY:</b>	Polyclonal
<b>CONJUGATE:</b>	Unconjugated

### Additional Info

<b>ALTERNATE NAMES:</b>	DDX6, DEAD (Asp-Glu-Ala-Asp) box polypeptide 6, HLR2, P54, RCK, DEAD box-6, DEAD/H (Asp-Glu-Ala-Asp/His) box polypeptide 6 (RNA helicase, 54kD), DEAD-box protien 6
<b>ACCESSION NO.:</b>	NP_004388.1

**PROTEIN GI NO.:** 4758140

**OFFICIAL SYMBOL:** DDX6

**GENE ID:** 1656

### Background

**REFERENCES:** 1) Cougot N, Babajko S, Seraphin B. Cytoplasmic foci are sites of mRNA decay in human cells. J Cell Biol. 2004 Apr;165(1):31-40. Epub 2004 Apr 5.

**FOR RESEARCH USE ONLY**

December 13, 2016