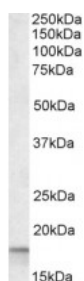




Cyclophilin A Antibody

CATALOG NUMBER: 45-442



Western Blot (0.1ug/ml) staining of Human Lymph lysate (35ug protein in RIPA buffer). Primary incubation was 1 hour. Detected by chemiluminescence.

Specifications

SPECIES REACTIVITY:

TESTED APPLICATIONS:

APPLICATIONS:	ELISA: antibody detection limit dilution 1:8000. Western Blot: Approx. 18kDa band observed in Human Lymph Node lysates (calculated MW 18.0kDa according to NP_066953.1), Recommended Concentration: 0.1-0.3ug/ml.
POSITIVE CONTROL:	1) Cat. No. 1369 - Human Lymph Node Tissue Lysate
SPECIFICITY:	This product is expected to also recognise PPIAL (NP_001008741.1, GeneID: 388817) which is identical to PPIA (NP_066953.1).
IMMUNOGEN:	Cyclophilin A antibody was raised against a 13 amino acid synthetic peptide near the internal region of Cyclophilin A.
HOST SPECIES:	Goat

Properties

PURIFICATION:	Cyclophilin A antibody was purified from goat serum by ammonium sulphate precipitation followed by antigen affinity chromatography using the immunizing peptide.
PHYSICAL STATE:	Liquid
BUFFER:	Cyclophilin A antibody is supplied in Tris saline, 0.02% sodium azide, pH 7.3 with 0.5% bovine serum albumin.
CONCENTRATION:	500 ug/mL
STORAGE CONDITIONS:	Aliquot and store at -20°C. Minimize freezing and thawing.
CLONALITY:	Polyclonal
CONJUGATE:	Unconjugated

Additional Info

ALTERNATE NAMES:	PPIA, peptidylprolyl isomerase A (cyclophilin A), HGNC:9253, CYPA, CYPH, MGC12404, T cell cyclophilin, cyclosporin A-binding protein, peptidyl-prolyl cis-trans isomerase A, peptidylprolyl isomerase A, rotamase
ACCESSION NO.:	NP_066953.1, NP_982254.1, NP_982255.1
PROTEIN GI NO.:	10863927

OFFICIAL SYMBOL:	PPIA
GENE ID:	5478

Background

REFERENCES: 1) Berthoux L, Sebastian S, Sokolskaja E, Luban J. Cyclophilin A is required for TRIM5{alpha}-mediated resistance to HIV-1 in Old World monkey cells. Proc Natl Acad Sci USA. 2005 Oct 11;102(41):14849-53. Epub 2005 Oct 3.

FOR RESEARCH USE ONLY

December 13, 2016