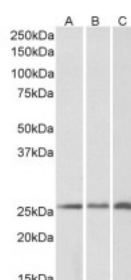


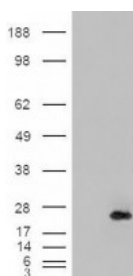


## CRP2 Antibody

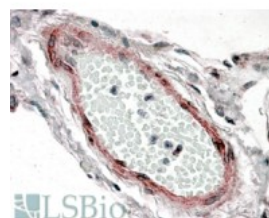
CATALOG NUMBER: 45-433



Western Blot (0.2ug/ml) staining of Human (A), Mouse (B) and Rat (C) Kidney lysates (35ug protein in RIPA buffer). Primary incubation was 1 hour. Detected by chemiluminescence



HEK293 overexpressing CRP2 and probed with antibody (mock transfection in first lane).



Immunohistochemistry (3.8ug/ml) staining of paraffin embedded Human Lung. Steamed antigen retrieval with citrate buffer pH 6, AP-staining.

### Specifications

<b>SPECIES REACTIVITY:</b>	Human, Mouse, Rat
<b>TESTED APPLICATIONS:</b>	ELISA, IHC-P, WB
<b>APPLICATIONS:</b>	ELISA: antibody detection limit dilution 1:64000. Western Blot: Approx 26kDa band observed in Human Heart and Kidney lysates and in Mouse and Rat Kidney lysates (calculated MW of 21.0kDa according to NP_001312.1). The observed molecular weight corresponds to earlier findings in literature with different Immunohistochemistry: In paraffin embedded Human Lung shows staining of the endothelial cells of a blood vessel. Recommended concentration, 3-6ug/ml.
<b>POSITIVE CONTROL:</b>	1) Cat. No. 1405 - Mouse Kidney Tissue Lysate
<b>IMMUNOGEN:</b>	CRP2 antibody was raised against a 12 amino acid synthetic peptide near the internal region of CRP2.
<b>HOST SPECIES:</b>	Goat

### Properties

<b>PURIFICATION:</b>	CRP2 antibody was purified from goat serum by ammonium sulphate precipitation followed by antigen affinity chromatography using the immunizing peptide.
<b>PHYSICAL STATE:</b>	Liquid
<b>BUFFER:</b>	CRP2 antibody is supplied in Tris saline, 0.02% sodium azide, pH 7.3 with 0.5% bovine serum albumin.
<b>CONCENTRATION:</b>	500 ug/mL
<b>STORAGE CONDITIONS:</b>	Aliquot and store at -20°C. Minimize freezing and thawing.
<b>CLONALITY:</b>	Polyclonal
<b>CONJUGATE:</b>	Unconjugated

### Additional Info

<b>ALTERNATE NAMES:</b>	cysteine and glycine-rich protein 2, CRP2, LMO5, SmLIM, LIM domain only 5, smooth muscle, SMLIM
<b>ACCESSION NO.:</b>	NP_001312.1
<b>PROTEIN GI NO.:</b>	4503101

**OFFICIAL SYMBOL:** CSRP2

**GENE ID:** 1466

### Background

**REFERENCES:** 1) Stearns ME, Wang M, Hu Y, Garcia FU. Interleukin-10 activation of the interleukin-10E1 pathway and tissue inhibitor of metalloproteinase-1 expression is enhanced by proteasome inhibitors in primary prostate tumor lines. Mol Cancer Res. 2003 Jul;1(9):631-42. Erratum in: Mol Cancer Res. 2003

**FOR RESEARCH USE ONLY**

December 13, 2016