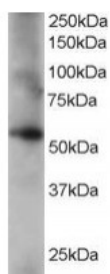




Coronin 3 Antibody

CATALOG NUMBER: 45-422



Western Blot staining (0.2ug/ml) of human lung lysate (RIPA buffer, 35ug total protein per lane). Primary incubated for 1 hour. Detected by western blot using chemiluminescence.

Specifications

SPECIES REACTIVITY:	Human
TESTED APPLICATIONS:	ELISA, WB
APPLICATIONS:	ELISA: antibody detection limit dilution 1:64000. Western Blot: Approx 55kDa band observed in human lung and placenta lysates (calculated MW of 53.2kDa according to NP_055140.1). Recommended for use at 0.2-1ug/ml.
POSITIVE CONTROL:	1) Cat. No. 1302 - Human Lung Tissue Lysate
IMMUNOGEN:	Coronin 3 antibody was raised against a 14 amino acid synthetic peptide near the C-Terminus of Coronin 3.
HOST SPECIES:	Goat

Properties

PURIFICATION:	Coronin 3 antibody was purified from goat serum by ammonium sulphate precipitation followed by antigen affinity chromatography using the immunizing peptide.
PHYSICAL STATE:	Liquid
BUFFER:	Coronin 3 antibody is supplied in Tris saline, 0.02% sodium azide, pH 7.3 with 0.5% bovine serum albumin.
CONCENTRATION:	500 ug/mL
STORAGE CONDITIONS:	Aliquot and store at -20°C. Minimize freezing and thawing.
CLONALITY:	Polyclonal
CONJUGATE:	Unconjugated

Additional Info

ALTERNATE NAMES:	CORO1C, HCRNN4, coronin-3, coronin, actin binding protein, 1C, coronin 1C, actin-binding protein, CRN2, CRNN4
ACCESSION NO.:	NP_055140
PROTEIN GI NO.:	7656991
OFFICIAL SYMBOL:	CORO1C

GENE ID: 23603

Background

REFERENCES: 1) Iizaka M, Han HJ, Akashi H, Furukawa Y, Nakajima Y, Sugano S, Ogawa M, Nakamura Y. Isolation and chromosomal assignment of a novel human gene, CORO1C, homologous to coronin-like actin-binding proteins. Cytogenet Cell Genet. 2000;88(3-4):221-4.

FOR RESEARCH USE ONLY

December 13, 2016