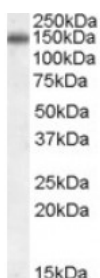




## CILP Antibody

CATALOG NUMBER: 45-402



Western Blot (0.03ug/ml) staining of rat spinal cord lysate (35ug protein in RIPA buffer). Primary incubation was 1 hour. Detected by chemiluminescence.

### Specifications

<b>SPECIES REACTIVITY:</b>	Rat
<b>TESTED APPLICATIONS:</b>	ELISA, WB
<b>APPLICATIONS:</b>	ELISA: antibody detection limit dilution 1:128000. Western Blot: Approx 150kDa band observed in rat spinal cord lysates (calculated MW of 133kDa according to human NP_003604.2 and of 132kDa according to Rat NP_001101631.1). Recommended concentration: 0.1-0.3ug/ml.
<b>POSITIVE CONTROL:</b>	1) Rat Spinal Cord Lysate
<b>IMMUNOGEN:</b>	CILP antibody was raised against a 13 amino acid synthetic peptide near the internal region of CILP.
<b>HOST SPECIES:</b>	Goat

### Properties

<b>PURIFICATION:</b>	CILP antibody was purified from goat serum by ammonium sulphate precipitation followed by antigen affinity chromatography using the immunizing peptide.
<b>PHYSICAL STATE:</b>	Liquid
<b>BUFFER:</b>	CILP antibody is supplied in Tris saline, 0.02% sodium azide, pH 7.3 with 0.5% bovine serum albumin.
<b>CONCENTRATION:</b>	500 ug/mL
<b>STORAGE CONDITIONS:</b>	Aliquot and store at -20°C. Minimize freezing and thawing.
<b>CLONALITY:</b>	Polyclonal
<b>CONJUGATE:</b>	Unconjugated

### Additional Info

<b>ALTERNATE NAMES:</b>	CILP, cartilage intermediate layer protein, nucleotide pyrophosphohydrolase, HGNC:1980, HsT18872, CILP-1
<b>ACCESSION NO.:</b>	NP_003604.2
<b>PROTEIN GI NO.:</b>	51944962
<b>OFFICIAL SYMBOL:</b>	CILP
<b>GENE ID:</b>	8483

## Background

**REFERENCES:** 1) Seki S, Kawaguchi Y, Chiba K, Mikami Y, Kizawa H, Oya T, Mio F, Mori M, Miyamoto Y, Masuda I, Tsunoda T, Kamata M, Kubo T, Toyama Y, Kimura T, Nakamura Y, Ikegawa S. A functional SNP in CILP, encoding cartilage intermediate layer protein, is associated with susceptibility to lumbar disc disease. Nat Genet. 2005 Jun;37(6):607-12. Epub 2005 May 1.

---

**FOR RESEARCH USE ONLY**

December 13, 2016