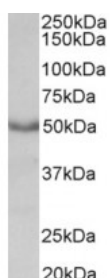




Cholinergic Receptor Antibody

CATALOG NUMBER: 45-400



Western Blot (0.3ug/ml) staining of Mouse Heart lysate (35ug protein in RIPA buffer). Primary incubation was 1 hour. Detected by chemiluminescence.

Specifications

SPECIES REACTIVITY:	Human
TESTED APPLICATIONS:	ELISA, WB
APPLICATIONS:	ELISA: antibody detection limit dilution 1:64000. Western Blot: Approx 50kDa band observed in Mouse Heart and Rat Heart lysates (calculated MW of 51.4kDa according to NP_000729.2). Recommended concentration: 0.3-1ug/ml.
POSITIVE CONTROL:	1) Cat. No. 1303 - Human Brain Tissue Lysate
IMMUNOGEN:	Cholinergic Receptor antibody was raised against a 16 amino acid synthetic peptide near the C-Terminus of Cholinergic Receptor.
HOST SPECIES:	Goat

Properties

PURIFICATION:	Cholinergic Receptor antibody was purified from goat serum by ammonium sulphate precipitation followed by antigen affinity chromatography using the immunizing peptide.
PHYSICAL STATE:	Liquid
BUFFER:	Cholinergic Receptor antibody is supplied in Tris saline, 0.02% sodium azide, pH 7.3 with 0.5% bovine serum albumin.
CONCENTRATION:	500 ug/mL
STORAGE CONDITIONS:	Aliquot and store at -20°C. Minimize freezing and thawing.
CLONALITY:	Polyclonal
CONJUGATE:	Unconjugated

Additional Info

ALTERNATE NAMES:	CHRM1, cholinergic receptor, muscarinic 1, HM1, M1, MGC30125, muscarinic acetylcholine receptor M1, M1R
ACCESSION NO.:	NP_000729.2
PROTEIN GI NO.:	37622910
OFFICIAL SYMBOL:	CHRM1

GENE ID: 1128

Background

REFERENCES: 1) Caccamo A, Oddo S, Billings LM, Green KN, Martinez-Coria H, Fisher A, LaFerla FM. M1 receptors play a central role in modulating AD-like pathology in transgenic mice. Neuron. 2006 Mar 2;49(5):671-82.

FOR RESEARCH USE ONLY

December 13, 2016