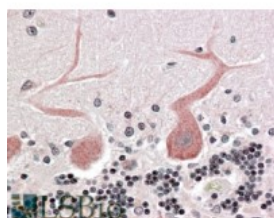




Cdc42-binding kinase alpha Antibody

CATALOG NUMBER: 45-384



Immunohistochemistry (3.8ug/ml) staining
of paraffin embedded Human
Cerebellum. Immunohistochemistry Steamed
antigen retrieval with citrate buffer pH 6,
AP-staining.

Specifications

SPECIES REACTIVITY:	Human
TESTED APPLICATIONS:	ELISA, IHC-P
APPLICATIONS:	ELISA: antibody detection limit dilution 1:16000. Western Blot: Preliminary experiments gave an approx 30kDa and 40kDa bands in Human Pancreas lysates at 1ug/ml. Please note that currently we cannot find an explanation in the literature for the band we observe given the calculated sizes of 186kDa accord Immunohistochemistry: In paraffin embedded Human Cerebellum shows cytoplasm staining in purkinje cells. Recommended concentration, 3-6ug/ml.
SPECIFICITY:	This antibody is expected to recognise both reported Human isoforms (NP_055641.3 and NP_003598.2).
IMMUNOGEN:	Cdc42-binding kinase alpha antibody was raised against a 13 amino acid synthetic peptide near the N-Terminus of Cdc42-binding kinase alpha.
HOST SPECIES:	Goat

Properties

PURIFICATION:	Cdc42-binding kinase alpha antibody was purified from goat serum by ammonium sulphate precipitation followed by antigen affinity chromatography using the immunizing peptide.
PHYSICAL STATE:	Liquid
BUFFER:	Cdc42-binding kinase alpha antibody is supplied in Tris saline, 0.02% sodium azide, pH 7.3 with 0.5% bovine serum albumin.
CONCENTRATION:	500 ug/mL
STORAGE CONDITIONS:	Aliquot and store at -20°C. Minimize freezing and thawing.
CLONALITY:	Polyclonal
CONJUGATE:	Unconjugated

Additional Info

ALTERNATE NAMES:	CDC42BPA, MRCK, MRCKA, PK428, FLJ23347, KIAA0451, CDC42 binding protein kinase alpha (DMPK-like),
-------------------------	---

ser-thr protein kinase PK428, myotonic dystrophy kinase-related CDC42-binding protein kinase alpha, Ser-Thr protein kinase related to the myotonic dystrophy protein kinase

ACCESSION NO.: NP_055641.3, NP_003598.2

PROTEIN GI NO.: 30089960

OFFICIAL SYMBOL: CDC42BPA

GENE ID: 8476

Background

REFERENCES: 1) Zhao Y, Loyer P, Li H, Valentine V, Kidd V, Kraft AS. Cloning and chromosomal location of a novel member of the myotonic dystrophy family of protein kinases. J Biol Chem. 1997 Apr 11;272(15):10013-20.

FOR RESEARCH USE ONLY

December 13, 2016