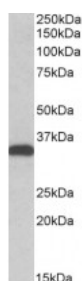




## CBR3 Antibody

CATALOG NUMBER: 45-369



Western Blot (0.5ug/ml) staining of HEK293 lysate (35ug protein in RIPA buffer). Primary incubation was 1 hour. Detected by chemiluminescence.

### Specifications

|                             |  |
|-----------------------------|--|
| <b>SPECIES REACTIVITY:</b>  | Human  |
| <b>TESTED APPLICATIONS:</b> | ELISA, WB  |
| <b>APPLICATIONS:</b>        | ELISA: antibody detection limit dilution 1:32000. Western Blot: Approx 35kDa band observed in lysates of cell line HEK293 (calculated MW of 30.9kDa according to NP_001227.1). The observed molecular weight corresponds to earlier findings in literature with different antibodies (Bains et al, J Pharmacol E |
| <b>IMMUNOGEN:</b>           | CBR3 antibody was raised against a 13 amino acid synthetic peptide near the C-Terminus of CBR3.  |
| <b>HOST SPECIES:</b>        | Goat   |

### Properties

|                            |   |
|----------------------------|---|
| <b>PURIFICATION:</b>       | CBR3 antibody was purified from goat serum by ammonium sulphate precipitation followed by antigen affinity chromatography using the immunizing peptide. |
| <b>PHYSICAL STATE:</b>     | Liquid  |
| <b>BUFFER:</b>             | CBR3 antibody is supplied in Tris saline, 0.02% sodium azide, pH 7.3 with 0.5% bovine serum albumin.  |
| <b>CONCENTRATION:</b>      | 500 ug/mL   |
| <b>STORAGE CONDITIONS:</b> | Aliquot and store at -20°C. Minimize freezing and thawing.  |
| <b>CLONALITY:</b>          | Polyclonal  |
| <b>CONJUGATE:</b>          | Unconjugated  |

### Additional Info

|                         |  |
|-------------------------|--|
| <b>ALTERNATE NAMES:</b> | CBR3, carbonyl reductase 3, carbonyl reductase (NADPH) 3, hCBR3, SDR21C2, HEL-S-25 |
| <b>ACCESSION NO.:</b>   | NP_001227  |
| <b>PROTEIN GI NO.:</b>  | 4502601  |
| <b>OFFICIAL SYMBOL:</b> | CBR3   |
| <b>GENE ID:</b>         | 874  |

### Background

---

**REFERENCES:**

1) Watanabe K, Sugawara C, Ono A, Fukuzumi Y, Itakura S, Yamazaki M, Tashiro H, Osoegawa K, Soeda E, Nomura T. Mapping of a novel human carbonyl reductase, CBR3, and ribosomal pseudogenes to human chromosome 21q22.2. *Genomics*. 1998 Aug 15;52(1):95-100.

---

**FOR RESEARCH USE ONLY**

December 13, 2016