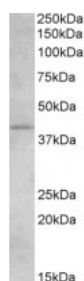




Cannabinoid Receptor 2 Antibody

CATALOG NUMBER: 45-356



Western Blot (1.5ug/ml) staining of Human Brain (Hippocampus) lysate (35ug protein in RIPA buffer). Primary incubation was 1 hour. Detected by chemiluminescence.

Specifications

SPECIES REACTIVITY:	Human
TESTED APPLICATIONS:	ELISA, WB
APPLICATIONS:	ELISA: antibody detection limit dilution 1:32000. Western Blot: Approx 40kDa band observed in Human Brain (Hippocampus) lysates (calculated MW of 46.2kDa according to NP_001832.1). The observed molecular weight corresponds to earlier findings with different antibodies from other commercial sources. Reco
POSITIVE CONTROL:	1) Cat. No. 1205 - Jurkat Cell Lysate
IMMUNOGEN:	Cannabinoid Receptor 2 antibody was raised against a 14 amino acid synthetic peptide near the C-Terminus of Cannabinoid Receptor 2.
HOST SPECIES:	Goat

Properties

PURIFICATION:	Cannabinoid Receptor 2 antibody was purified from goat serum by ammonium sulphate precipitation followed by antigen affinity chromatography using the immunizing peptide.
PHYSICAL STATE:	Liquid
BUFFER:	Cannabinoid Receptor 2 antibody is supplied in Tris saline, 0.02% sodium azide, pH 7.3 with 0.5% bovine serum albumin.
CONCENTRATION:	500 ug/mL
STORAGE CONDITIONS:	Aliquot and store at -20°C. Minimize freezing and thawing.
CLONALITY:	Polyclonal
CONJUGATE:	Unconjugated

Additional Info

ALTERNATE NAMES:	CNR3, cannabinoid receptor 2 (macrophage), HGNC:2160, CB2, CX5, OTTHUMP00000044841, CB2A, CB2B
ACCESSION NO.:	NP_001832.1
PROTEIN GI NO.:	4502929
OFFICIAL SYMBOL:	CNR2

GENE ID: 1269

Background

REFERENCES: 1) Van Sickle MD, Duncan M, Kingsley PJ, Mouihate A, Urbani P, Mackie K, Stella N, Makriyannis A, Piomelli D, Davison JS, Marnett LJ, Di Marzo V, Pittman QJ, Patel KD, Sharkey KA. Identification and functional characterization of brainstem cannabinoid CB2 receptors. Science. 2005 Oct 14;310(5746):329-32.

FOR RESEARCH USE ONLY

December 13, 2016