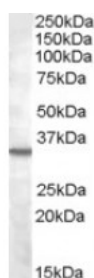




## Bradykinin Receptor B1 Antibody

CATALOG NUMBER: 45-338



Western Blot (2ug/ml) staining of K562  
lysate (35ug protein in RIPA buffer).  
Primary incubation was 1 hour. Detected  
by chemiluminescence.

### Specifications

<b>SPECIES REACTIVITY:</b>	Human
<b>TESTED APPLICATIONS:</b>	ELISA, WB
<b>APPLICATIONS:</b>	ELISA: antibody detection limit dilution 1:1000. Western Blot: Approx 35kDa band observed in lysates of cell lines Daudi, K562 and U937 calculated MW of 40.5kDa according to NP_000701.2). The observed molecular weight corresponds to earlier findings with different antibodies from other commercial sources
<b>POSITIVE CONTROL:</b>	1) Cat. No. 1204 - K562 Cell Lysate
<b>IMMUNOGEN:</b>	Bradykinin Receptor B1 antibody was raised against a 12 amino acid synthetic peptide near the internal region of Bradykinin Receptor B1.
<b>HOST SPECIES:</b>	Goat

### Properties

<b>PURIFICATION:</b>	Bradykinin Receptor B1 antibody was purified from goat serum by ammonium sulphate precipitation followed by antigen affinity chromatography using the immunizing peptide.
<b>PHYSICAL STATE:</b>	Liquid
<b>BUFFER:</b>	Bradykinin Receptor B1 antibody is supplied in Tris saline, 0.02% sodium azide, pH 7.3 with 0.5% bovine serum albumin.
<b>CONCENTRATION:</b>	500 ug/mL
<b>STORAGE CONDITIONS:</b>	Aliquot and store at -20°C. Minimize freezing and thawing.
<b>CLONALITY:</b>	Polyclonal
<b>CONJUGATE:</b>	Unconjugated

### Additional Info

<b>ALTERNATE NAMES:</b>	BDKRB1, bradykinin receptor B1, B1BKR, B1R, BKB1R, BKR1, BRADYB1, BK-1 receptor, bradykinin B1 receptor, bradykinin receptor 1
<b>ACCESSION NO.:</b>	NP_000701.2
<b>PROTEIN GI NO.:</b>	20544172

**OFFICIAL SYMBOL:** BDKRB1

**GENE ID:** 623

### Background

**REFERENCES:** 1) Bengtson SH, Eddleston J, Christiansen SC, Zuraw BL. Double-stranded RNA increases kinin B1 receptor expression and function in human airway epithelial cells. Int Immunopharmacol. 2007 Dec 20;7(14):1880-7. Epub 2007 Jul 30

**FOR RESEARCH USE ONLY**

December 13, 2016