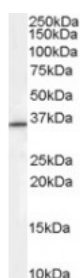




BCA2 Antibody

CATALOG NUMBER: 45-323



Western Blot (0.3ug/ml) staining of HEPG2 cell lysate (35ug protein in RIPA buffer). Primary incubation was 1 hour. Detected by chemiluminescence.

Specifications

SPECIES REACTIVITY:	Human
TESTED APPLICATIONS:	ELISA, WB
APPLICATIONS:	ELISA: antibody detection limit dilution 1:32000. Western Blot: Approx 35kDa band observed in Human lysates of cell line HEPC2 (calculated MW of 33.7kDa according to NP_055270.1). Recommended concentration: 0.3-1ug/ml.
POSITIVE CONTROL:	1) Cat. No. 1211 - HepG2 Cell Lysate 2) Cat. No. 11-801 - Human Small Intestine Tissue Slide
IMMUNOGEN:	BCA2 antibody was raised against a 14 amino acid synthetic peptide near the internal region of BCA2.
HOST SPECIES:	Goat

Properties

PURIFICATION:	BCA2 antibody was purified from goat serum by ammonium sulphate precipitation followed by antigen affinity chromatography using the immunizing peptide.
PHYSICAL STATE:	Liquid
BUFFER:	BCA2 antibody is supplied in Tris saline, 0.02% sodium azide, pH 7.3 with 0.5% bovine serum albumin.
CONCENTRATION:	500 ug/mL
STORAGE CONDITIONS:	Aliquot and store at -20°C. Minimize freezing and thawing.
CLONALITY:	Polyclonal
CONJUGATE:	Unconjugated

Additional Info

ALTERNATE NAMES:	ZNF364, zinc finger protein 364, CL469780, RNF115, Rabring 7, BCA2, breast cancer-associated gene 2, ZNF364
ACCESSION NO.:	NP_055270.1
PROTEIN GI NO.:	33859668

OFFICIAL SYMBOL: RNF115

GENE ID: 27246

Background

REFERENCES: 1) Burger AM, Gao Y, Amemiya Y, Kahn HJ, Kitching R, Yang Y, Sun P, Narod SA, Hanna WM, Seth AK. A novel RING-type ubiquitin ligase breast cancer-associated gene 2 correlates with outcome in invasive breast cancer. Cancer Res. 2005 Nov 15;65(22):10401-12.

FOR RESEARCH USE ONLY

December 13, 2016