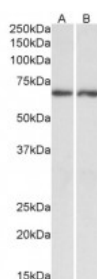




ACHE Antibody

CATALOG NUMBER: 45-193



Western Blot (0.3ug/ml) staining of Human Brain (CerWestern Blot) lysate (35ug protein in RIPA buffer). Primary incubation was 1 hour. Detected by chemiluminescence.

Specifications

SPECIES REACTIVITY:	Human
TESTED APPLICATIONS:	ELISA, WB
APPLICATIONS:	ELISA: antibody detection limit dilution 1:128000. Western Blot: Approx 67kDa band observed in Human Brain (Cerebellum and Hippocampus) lysates (calculated MW of 67kDa according to NP_000656.1). Recommended concentration: 0.3-1ug/ml.
POSITIVE CONTROL:	1) Cat. No. XBL-10110 - Human Hippocampus Tissue Lysate
SPECIFICITY:	This antibody is expected to recognise isoform NP_000656 only (the ubiquitously expressed, hydrophilic form).
IMMUNOGEN:	ACHE antibody was raised against a 14 amino acid synthetic peptide near the C-Terminus of ACHE.
HOST SPECIES:	Goat

Properties

PURIFICATION:	ACHE antibody was purified from goat serum by ammonium sulphate precipitation followed by antigen affinity chromatography using the immunizing peptide.
PHYSICAL STATE:	Liquid
BUFFER:	ACHE antibody is supplied in Tris saline, 0.02% sodium azide, pH 7.3 with 0.5% bovine serum albumin.
CONCENTRATION:	500 ug/mL
STORAGE CONDITIONS:	Aliquot and store at -20°C. Minimize freezing and thawing.
CLONALITY:	Polyclonal
CONJUGATE:	Unconjugated

Additional Info

ALTERNATE NAMES:	ACHE, YT, acetylcholinesterase (YT blood group), ACEE, ARACHE, N-ACHE
ACCESSION NO.:	NP_000656.1
PROTEIN GI NO.:	4557239

OFFICIAL SYMBOL: ACHE

GENE ID: 43

Background

REFERENCES: 1) Cottingham MG, Voskuil JL, Vaux DJ. The intact human acetylcholinesterase C-terminal oligomerization domain is alpha-helical in situ and in isolation, but a shorter fragment forms beta-sheet-rich amyloid fibrils and protofibrillar oligomers. *Biochemistry*. 2003 Sep 16;42(36):10863-73.

FOR RESEARCH USE ONLY

December 13, 2016