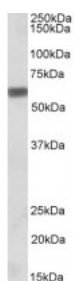




Osteopontin Antibody

CATALOG NUMBER: 45-152



Western Blot (0.5ug/ml) staining of MOLT4 lysate (35ug protein in RIPA buffer). Primary incubation was 1 hour. Detected by chemiluminescence.

Specifications

SPECIES REACTIVITY:	Human
TESTED APPLICATIONS:	ELISA, WB
APPLICATIONS:	ELISA: antibody detection limit dilution 1:32000. Western Blot: Approx 60kDa band observed in lysates of Human Tonsil and Spleen and lysates of cell line MOLT4 and Jurkat (calculated MW of 33.8kDa according to NP_000573.1). The observed molecular weight corresponds to earlier findings in literature (Si
POSITIVE CONTROL:	1) Cat. No. 1206 - MOLT4 Cell Lysate
IMMUNOGEN:	Osteopontin antibody was raised against a 12 amino acid synthetic peptide near the C-Terminus of Osteopontin.
HOST SPECIES:	Goat

Properties

PURIFICATION:	Osteopontin antibody was purified from goat serum by ammonium sulphate precipitation followed by antigen affinity chromatography using the immunizing peptide.
PHYSICAL STATE:	Liquid
BUFFER:	Osteopontin antibody is supplied in Tris saline, 0.02% sodium azide, pH 7.3 with 0.5% bovine serum albumin.
CONCENTRATION:	500 ug/mL
STORAGE CONDITIONS:	Aliquot and store at -20°C. Minimize freezing and thawing.
CLONALITY:	Polyclonal
CONJUGATE:	Unconjugated

Additional Info

ALTERNATE NAMES:	SPP1, secreted phosphoprotein 1 (osteopontin, bone sialoprotein I, early T-lymphocyte activation 1), HGNC:11255, BNSP, BSPI, ETA-1, MGC110940, OPN, Secreted phosphoprotein-1 (osteopontin, bone sialoprotein), secreted phosphoprotein 1, PSEC0156
ACCESSION NO.:	NP_000573.1
PROTEIN GI NO.:	4759166
OFFICIAL SYMBOL:	SPP1

GENE ID: 6696

Background

REFERENCES: 1) Kolb A, Kleeff J, Guweidhi A, Esposito I, Giese NA, Adwan H, Giese T, Buchler MW, Berger MR, Friess H. Osteopontin Influences the Invasiveness of Pancreatic Cancer Cells and is Increased in Neoplastic and Inflammatory Conditions. Cancer Biol Ther. 2005 Jul 5;4(7)

FOR RESEARCH USE ONLY

December 13, 2016