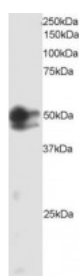




## SMAD2 Antibody

CATALOG NUMBER: 45-147



Western Blot staining (2ug/ml) of HeLa lysate (RIPA buffer, 35ug total protein per lane). Primary incubated for 1 hour. Detected by western blot using chemiluminescence.

### Specifications

<b>SPECIES REACTIVITY:</b>	Human
<b>TESTED APPLICATIONS:</b>	ELISA, WB
<b>APPLICATIONS:</b>	ELISA: antibody detection limit dilution 1:4000. Western Blot: Approx 45kDa and 50kDa bands seen in HeLa cell lysates. Recommended for use at 1-3ug/ml.
<b>POSITIVE CONTROL:</b>	1) Cat. No. 1201 - HeLa Cell Lysate
<b>IMMUNOGEN:</b>	SMAD2 antibody was raised against a 14 amino acid synthetic peptide near the internal region of SMAD2.
<b>HOST SPECIES:</b>	Goat

### Properties

<b>PURIFICATION:</b>	SMAD2 antibody was purified from goat serum by ammonium sulphate precipitation followed by antigen affinity chromatography using the immunizing peptide.
<b>PHYSICAL STATE:</b>	Liquid
<b>BUFFER:</b>	SMAD2 antibody is supplied in Tris saline, 0.02% sodium azide, pH 7.3 with 0.5% bovine serum albumin.
<b>CONCENTRATION:</b>	500 ug/mL
<b>STORAGE CONDITIONS:</b>	Aliquot and store at -20°C. Minimize freezing and thawing.
<b>CLONALITY:</b>	Polyclonal
<b>CONJUGATE:</b>	Unconjugated

### Additional Info

<b>ALTERNATE NAMES:</b>	MADH2, MAD, mothers against decapentaplegic homolog 2 (Drosophila), JV18, MADR2, SMAD2, JV18-1, Mothers against decapentaplegic, Drosophila, homolog of, 2, MAD (mothers against decapentaplegic, Drosophila) homolog 2, MADH2
<b>ACCESSION NO.:</b>	NP_005892
<b>PROTEIN GI NO.:</b>	5174511
<b>OFFICIAL SYMBOL:</b>	SMAD2

---

**GENE ID:** 4087

---

### Background

**REFERENCES:** 1) Eppert K, Scherer SW, Ozcelik H, Pirone R, Hoodless P, Kim H, Tsui LC, Bapat B, Gallinger S, Andrulis IL, Thomsen GH, Wrana JL, Attisano L. MADR2 maps to 18q21 and encodes a TGFbeta-regulated MAD-related protein that is functionally mutated in colorectal carcinoma. Cell 1996 Aug 23;86(4):543-52

---

**FOR RESEARCH USE ONLY**

December 13, 2016