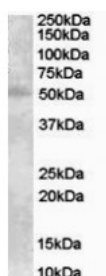


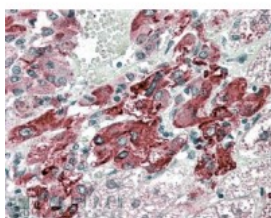


VMAT2 Antibody

CATALOG NUMBER: 45-146



Western Blot (0.3ug/ml) staining of Human Placenta lysate (35ug protein in RIPA buffer). Primary incubation was 1 hour. Detected by chemiluminescence.



Immunohistochemistry (2.5ug/ml) staining of paraffin embedded Human Adrenal Gland. Steamed antigen retrieval with citrate buffer pH 6, AP-staining.

Specifications

SPECIES REACTIVITY:	Human
TESTED APPLICATIONS:	ELISA, IHC-P, WB
APPLICATIONS:	ELISA: antibody detection limit dilution 1:8000. Western Blot: A faint band of appr. 50kDa band observed in Human Placenta lysates (calculated MW of 55.7kDa according to NP_003045). Recommended concentration: 0.3-1.0 ug/ml. Immunohistochemistry: In paraffin embedded Human Adrenal Gland shows vesicular cytoplasm staining of some epithelial cells in the medula. Recommended concentration, 2-4ug/ml.
POSITIVE CONTROL:	1) Cat. No. 1309 - Human Placenta Lysate
IMMUNOGEN:	VMAT2 antibody was raised against a 13 amino acid synthetic peptide near the C-Terminus of VMAT2.
HOST SPECIES:	Goat

Properties

PURIFICATION:	VMAT2 antibody was purified from goat serum by ammonium sulphate precipitation followed by antigen affinity chromatography using the immunizing peptide.
PHYSICAL STATE:	Liquid
BUFFER:	VMAT2 antibody is supplied in Tris saline, 0.02% sodium azide, pH 7.3 with 0.5% bovine serum albumin.
CONCENTRATION:	500 ug/mL
STORAGE CONDITIONS:	Aliquot and store at -20°C. Minimize freezing and thawing.
CLONALITY:	Polyclonal
CONJUGATE:	Unconjugated

Additional Info

ALTERNATE NAMES:	VMAT2, SVAT, SVMT, VAT2, VMAT2, solute carrier family 18 (vesicular monoamine), member 2
ACCESSION NO.:	NP_003045
PROTEIN GI NO.:	42476325
OFFICIAL SYMBOL:	SLC18A2

GENE ID: 6571

Background

REFERENCES: 1) Erickson JD, Eiden LE, Hoffman BJ. Expression cloning of a reserpine-sensitive vesicular monoamine transporter. Proc Natl Acad Sci USA. 1992 Nov 15;89(22):10993-7.

FOR RESEARCH USE ONLY

December 13, 2016