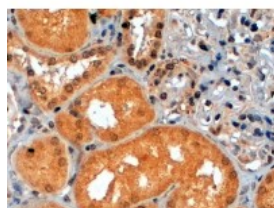




p70 S6 Kinase Antibody

CATALOG NUMBER: 45-138



Immunohistochemistry (2ug/ml) staining of paraffin embedded Human Kidney. Steamed antigen retrieval with citrate buffer pH 6, HRP-staining.



Immunohistochemistry (1ug/ml) staining of Rat Brain lysate (35ug protein in RIPA buffer). Primary incubation was 1 hour. Detected by chemiluminescence.

Specifications

SPECIES REACTIVITY:

TESTED APPLICATIONS: IHC-P, WB

APPLICATIONS: ELISA: antibody detection limit dilution 1:8000. Western Blot: Approx 60kDa band observed in Human Placenta lysates (calculated MW of 59.1kDa according to NP_003152.1). Recommended concentration: 0.05-0.1ug/ml. Immunohistochemistry: In paraffin embedded Human Kidney shows staining in the cytoplasm-rich PCT while less so in the DCT and no signals in the glomerulus. Recommended concentration, 2-4ug/ml.

POSITIVE CONTROL: 1) Cat. No. 1375 - Human Skeletal Muscle Tissue Lysate

IMMUNOGEN: p70 S6 Kinase antibody was raised against a 13 amino acid synthetic peptide near the C-Terminus of p70 S6 Kinase.

HOST SPECIES: Goat

Properties

PURIFICATION: p70 S6 Kinase antibody was purified from goat serum by ammonium sulphate precipitation followed by antigen affinity chromatography using the immunizing peptide.

PHYSICAL STATE: Liquid

BUFFER: p70 S6 kinase antibody is supplied in Tris saline, 0.02% sodium azide, pH 7.3 with 0.5% bovine serum albumin.

CONCENTRATION: 500 ug/mL

STORAGE CONDITIONS: Aliquot and store at -20°C. Minimize freezing and thawing.

CLONALITY: Polyclonal

CONJUGATE: Unconjugated

Additional Info

ALTERNATE NAMES: RPS6KB1, ribosomal protein S6 kinase, 70kD, polypeptide 1, PS6K, S6K, S6K1, STK14A, p70(S6K)-alpha, p70-S6K, p70-alpha, p70 S6 kinase, alpha 1, alpha 2, serine/threonine kinase 14 alpha

ACCESSION NO.: NP_003152.1

PROTEIN GI NO.: 4506737

OFFICIAL SYMBOL: RPS6KB1

GENE ID: 6198

Background

REFERENCES: 1) Grove JR, Banerjee P, Balasubramanyam A, Coffey PJ, Price DJ, Avruch J, Woodgett JR. Cloning and expression of two human p70 S6 kinase polypeptides differing only at their amino termini. Mol Cell Biol. 1991 Nov;11(11):5541-50.

FOR RESEARCH USE ONLY

December 13, 2016