

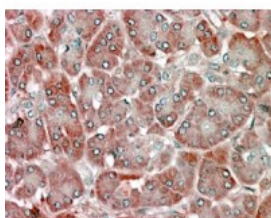


RBP1 Antibody

CATALOG NUMBER: 45-136



Western Blot (0.1ug/ml) staining of NIH 3T3 lysate (35ug protein in RIPA buffer). Primary incubation was 1 hour. Detected by chemiluminescence.



Immunohistochemistry (5ug/ml) staining of paraffin embedded Human Pancreas. Steamed antigen retrieval with citrate buffer pH 6, AP-staining.

Specifications

SPECIES REACTIVITY:	Human, Mouse
TESTED APPLICATIONS:	ELISA, IHC-P, WB
APPLICATIONS:	ELISA: antibody detection limit dilution 1:4000. Western Blot: Approx 16kDa band observed in Murine NIH 3T3 lysates (calculated MW of 15.9kDa according to NP_002890.1). Recommended concentration: 0.1-0.3ug/ml. Immunohistochemistry: In paraffin embedded Human Pancreas shows vesicular staining in the acinar cytoplasm but oriented towards the interlobular space.. Recommended concentration, 5-10ug/ml.
POSITIVE CONTROL:	1) Cat. No. 1282 - 3T3 (NIH) Cell Lysate
IMMUNOGEN:	RBP1 antibody was raised against a 14 amino acid synthetic peptide near the C-Terminus of RBP1.
HOST SPECIES:	Goat

Properties

PURIFICATION:	RBP1 antibody was purified from goat serum by ammonium sulphate precipitation followed by antigen affinity chromatography using the immunizing peptide.
PHYSICAL STATE:	Liquid
BUFFER:	RBP1 antibody is supplied in Tris saline, 0.02% sodium azide, pH 7.3 with 0.5% bovine serum albumin.
CONCENTRATION:	500 ug/mL
STORAGE CONDITIONS:	Aliquot and store at -20°C. Minimize freezing and thawing.
CLONALITY:	Polyclonal
CONJUGATE:	Unconjugated

Additional Info

ALTERNATE NAMES:	RBP1, CRBP, RBPC, CRBP1, CRABP-I, retinol binding protein 1, cellular, retinol-binding protein 1
ACCESSION NO.:	NP_002890.1
PROTEIN GI NO.:	4506451
OFFICIAL SYMBOL:	RBP1

GENE ID: 5947

Background

REFERENCES: 1) Farias EF, Ong DE, Ghyselinck NB, Nakajo S, Kuppumbatti YS, Mira y Lopez R. Cellular retinol-binding protein I, a regulator of breast epithelial retinoic acid receptor activity, cell differentiation, and tumorigenicity. J Natl Cancer Inst. 2005 Jan 5;97(1):21-9.

FOR RESEARCH USE ONLY

December 13, 2016