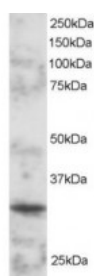




## POU2AF1 Antibody

CATALOG NUMBER: 45-116



Western blot analysis of POU2AF1 in mouse spleen lysate (RIPA buffer, 30 ug total protein per lane) using POU2AF1 Antibody at 2 ug/mL.

### Specifications

<b>SPECIES REACTIVITY:</b>	Mouse
<b>TESTED APPLICATIONS:</b>	ELISA, WB
<b>APPLICATIONS:</b>	ELISA: antibody detection limit dilution 1:32000. Western Blot: Approx 30kDa band seen in mouse spleen lysate (Predicted MW of 28kDa according to NP_006226). Recommended for use at 1-3ug/ml.
<b>POSITIVE CONTROL:</b>	1) Cat. No. 1406 - Mouse Spleen Tissue Lysate
<b>IMMUNOGEN:</b>	POU2AF1 antibody was raised against a 14 amino acid synthetic peptide near the C-Terminus of POU2AF1.
<b>HOST SPECIES:</b>	Goat

### Properties

<b>PURIFICATION:</b>	POU2AF1 antibody was purified from goat serum by ammonium sulphate precipitation followed by antigen affinity chromatography using the immunizing peptide.
<b>PHYSICAL STATE:</b>	Liquid
<b>BUFFER:</b>	POU2AF1 antibody is supplied in Tris saline, 0.02% sodium azide, pH 7.3 with 0.5% bovine serum albumin.
<b>CONCENTRATION:</b>	500 ug/mL
<b>STORAGE CONDITIONS:</b>	Aliquot and store at -20°C. Minimize freezing and thawing.
<b>CLONALITY:</b>	Polyclonal
<b>CONJUGATE:</b>	Unconjugated

### Additional Info

<b>ALTERNATE NAMES:</b>	POU2AF1, BOB1, OBF1, OCAB, OBF-1, POU domain, class 2, associating factor 1
<b>ACCESSION NO.:</b>	NP_006226
<b>PROTEIN GI NO.:</b>	167900478
<b>OFFICIAL SYMBOL:</b>	POU2AF1
<b>GENE ID:</b>	5450

## Background

**REFERENCES:** 1) Strubin M, Newell JW, Matthias P. OBF-1, a novel B cell-specific coactivator that stimulates immunoglobulin promoter activity through association with octamer-binding proteins. Cell. 1995 Feb 10;80(3):497-506.

---

**FOR RESEARCH USE ONLY**

December 13, 2016