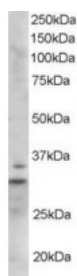




LIME1 Antibody

CATALOG NUMBER: 45-085



Western Blot staining (1ug/ml) of Mouse Heart lysate (RIPA buffer, 35ug total protein per lane). Primary incubated for 1 hour. Detected by western blot using chemiluminescence.

Specifications

SPECIES REACTIVITY:	Mouse
TESTED APPLICATIONS:	ELISA, WB
APPLICATIONS:	ELISA: antibody detection limit dilution 1:128000. Western Blot: Approx 32kDa band observed in Mouse Heart lysates (predicted MW of 31kDa according to NP_076173.1). Recommended for use at 0.5-2ug/ml.
POSITIVE CONTROL:	1) Cat. No. 1401 - Mouse Heart Tissue Lysate
IMMUNOGEN:	LIME1 antibody was raised against a 12 amino acid synthetic peptide near the C-Terminus of LIME1.
HOST SPECIES:	Goat

Properties

PURIFICATION:	LIME1 antibody was purified from goat serum by ammonium sulphate precipitation followed by antigen affinity chromatography using the immunizing peptide.
PHYSICAL STATE:	Liquid
BUFFER:	LIME1 antibody is supplied in Tris saline, 0.02% sodium azide, pH 7.3 with 0.5% bovine serum albumin.
CONCENTRATION:	500 ug/mL
STORAGE CONDITIONS:	Aliquot and store at -20°C. Minimize freezing and thawing.
CLONALITY:	Polyclonal
CONJUGATE:	Unconjugated

Additional Info

ALTERNATE NAMES:	LIME1, Lck interacting transmembrane adaptor 1, 2810038K19Rik, LIME, RIKEN cDNA 2810038K19 gene, Lime
ACCESSION NO.:	NP_076173.1
PROTEIN GI NO.:	12963783
OFFICIAL SYMBOL:	Lime1
GENE ID:	72699 (mouse); 362289 (rat);

Background

REFERENCES: 1) Hur EM, Son M, Lee OH, Choi YB, Park C, Lee H, Yun Y. LIME, a novel transmembrane adaptor protein, associates with p56lck and mediates T cell activation. J Exp Med. 2003 Nov 17;198(10):1463-73. Epub 2003 Nov 10.

FOR RESEARCH USE ONLY

December 13, 2016