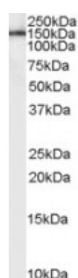




Leptin Receptor Antibody

CATALOG NUMBER: 45-084



Western Blot (1ug/ml) staining of Human Brain lysate (35ug protein in RIPA buffer). Primary incubation was 1 hour. Detected by chemiluminescence.

Specifications

SPECIES REACTIVITY:	Human
TESTED APPLICATIONS:	ELISA, WB
APPLICATIONS:	ELISA: antibody detection limit dilution 1:16000. Western Blot: Approx 150kDa band observed in Human Brain lysates (calculated MW of 132kDa according to NP_002294.2). Recommended concentration: 1-3ug/ml.
POSITIVE CONTROL:	1) Cat. No. 1303 - Human Brain Tissue Lysate
SPECIFICITY:	This antibody is expected to recognise all three reported isoforms (NP_002294.2; NP_001003679.1; NP_001003680.1).
IMMUNOGEN:	Leptin Receptor antibody was raised against a 13 amino acid synthetic peptide near the internal region of Leptin Receptor.
HOST SPECIES:	Goat

Properties

PURIFICATION:	Leptin Receptor antibody was purified from goat serum by ammonium sulphate precipitation followed by antigen affinity chromatography using the immunizing peptide.
PHYSICAL STATE:	Liquid
BUFFER:	Leptin receptor antibody is supplied in Tris saline, 0.02% sodium azide, pH 7.3 with 0.5% bovine serum albumin.
CONCENTRATION:	500 ug/mL
STORAGE CONDITIONS:	Aliquot and store at -20°C. Minimize freezing and thawing.
CLONALITY:	Polyclonal
CONJUGATE:	Unconjugated

Additional Info

ALTERNATE NAMES:	LEPR, leptin receptor, CD295, OBR, OB receptor, LeprB, DB
ACCESSION NO.:	NP_002294.2, NP_001003679.1, NP_001003680.1
PROTEIN GI NO.:	40254464

OFFICIAL SYMBOL: LEPR

GENE ID: 3953

Background

REFERENCES: 1) Snoussi K, Strosberg AD, Bouaouina N, Ben Ahmed S, Helal AN, Chouchane L. Leptin and leptin receptor polymorphisms are associated with increased risk and poor prognosis of breast carcinoma. BMC Cancer. 2006 Feb 20;6:38.

FOR RESEARCH USE ONLY

December 13, 2016