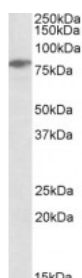




LCP2 Antibody

CATALOG NUMBER: 45-081



Western Blot (0.3ug/ml) staining of Jurkat lysate (35ug protein in RIPA buffer). Primary incubation was 1 hour. Detected by chemiluminescence.

Specifications

SPECIES REACTIVITY:	Human
TESTED APPLICATIONS:	ELISA, WB
APPLICATIONS:	ELISA: antibody detection limit dilution 1:128000. Western Blot: Approx 80kDa band observed in lysates of cell line Jurkat (calculated MW of 60.2kDa according to NP_005556.1). The observed molecular weight corresponds to earlier findings in literature with different antibodies (Jackman et al, J Biol Chem)
POSITIVE CONTROL:	1) Cat. No. 1205 - Jurkat Cell Lysate
IMMUNOGEN:	LCP2 antibody was raised against an 11 amino acid synthetic peptide near the N-Terminus of LCP2.
HOST SPECIES:	Goat

Properties

PURIFICATION:	LCP2 antibody was purified from goat serum by ammonium sulphate precipitation followed by antigen affinity chromatography using the immunizing peptide.
PHYSICAL STATE:	Liquid
BUFFER:	LCP2 antibody is supplied in Tris saline, 0.02% sodium azide, pH 7.3 with 0.5% bovine serum albumin.
CONCENTRATION:	500 ug/mL
STORAGE CONDITIONS:	Aliquot and store at -20°C. Minimize freezing and thawing.
CLONALITY:	Polyclonal
CONJUGATE:	Unconjugated

Additional Info

ALTERNATE NAMES:	LCP2, SLP76, SLP-76, lymphocyte cytosolic protein 2 (SH2 domain containing leukocyte protein of 76 kDa), 76 kDa tyrosine phosphoprotein, SH2 domain-containing leukocyte protein of 76kD, lymphocyte cytosolic protein 2 (SH2 domain containing leukocyte protei
ACCESSION NO.:	NP_005556
PROTEIN GI NO.:	5031855
OFFICIAL SYMBOL:	LCP2

GENE ID: 3937

Background

REFERENCES: 1) Jackman JK, Motto DG, Sun Q, Tanemoto M, Turck CW, Peltz GA, Koretzky GA, Findell PR. Molecular cloning of SLP-76, a 76- kDa tyrosine phosphoprotein associated with Grb2 in T cells. J Biol Chem. 1995 Mar 31;270(13):7029-32.

FOR RESEARCH USE ONLY

December 13, 2016