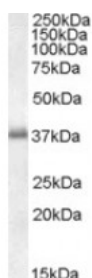




LAT Antibody

CATALOG NUMBER: 45-080



Western Blot (0.01ug/ml) staining of peripheral blood mononucleocytes lysate (35ug protein in RIPA buffer). Primary incubation was 1 hour. Detected by chemiluminescence.

Specifications

SPECIES REACTIVITY:	Human, Mouse, Rat
TESTED APPLICATIONS:	ELISA, WB
APPLICATIONS:	ELISA: antibody detection limit dilution 1:2000. Western Blot: Approx 37kDa band observed in Human Lymph Node and Peripheral Blood Mononucleocytes lysates and in Mouse and Rat Thymus lysates (calculated MW of 27.9kDa according to NP_055202.1). The observed molecular weight corresponds to earlier findings.
POSITIVE CONTROL:	1) Cat. No. 1371 - Human peripheral blood leukocyte (PBL) Lysate
SPECIFICITY:	This antibody is expected to recognize isoform a (NP_055202.1), isoform b (NP_001014987.1 and NP_001014989.1) and isoform c (NP_001014988.1).
IMMUNOGEN:	LAT antibody was raised against a 12 amino acid synthetic peptide near the C-Terminus of LAT.
HOST SPECIES:	Goat

Properties

PURIFICATION:	LAT antibody was purified from goat serum by ammonium sulphate precipitation followed by antigen affinity chromatography using the immunizing peptide.
PHYSICAL STATE:	Liquid
BUFFER:	LAT antibody is supplied in Tris saline, 0.02% sodium azide, pH 7.3 with 0.5% bovine serum albumin.
CONCENTRATION:	500 ug/mL
STORAGE CONDITIONS:	Aliquot and store at -20°C. Minimize freezing and thawing.
CLONALITY:	Polyclonal
CONJUGATE:	Unconjugated

Additional Info

ALTERNATE NAMES:	LAT, linker for activation of T cells, LAT1, pp36, 36 kDa phospho-tyrosine adaptor protein
ACCESSION NO.:	NP_055202.1, NP_001014987.1, NP_001014989.1, NP_001014988.1
PROTEIN GI NO.:	7657293

OFFICIAL SYMBOL:	LAT
GENE ID:	27040

Background

REFERENCES: 1) Finco TS, Kadlecsek T, Zhang W, Samelson LE, Weiss A. LAT is required for TCR-mediated activation of PLCgamma1 and the Ras pathway. Immunity. 1998 Nov;9(5):617-26.

FOR RESEARCH USE ONLY

December 13, 2016