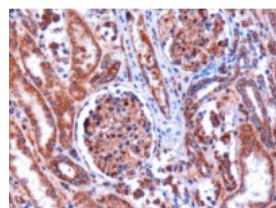


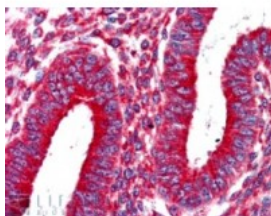


KIF5B Antibody

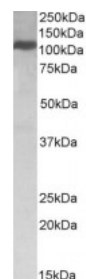
CATALOG NUMBER: 45-077



Immunohistochemistry (1ug/ml) staining of paraffin embedded Human Kidney. Microwaved antigen retrieval with Tris/EDTA buffer pH9, HRP-staining. Please note this data was obtained with a previous batch.



Immunohistochemistry (2.5ug/ml) staining of paraffin embedded Human Uterus. Steamed antigen retrieval with citrate buffer pH 6, AP-staining. Please note this data was obtained with a previous batch.



Western Blot (0.5ug/ml) staining of lysate of cell line Jurkat (35ug protein in RIPA buffer). Primary incubation was 1 hour. Detected by chemiluminescence.

Specifications

SPECIES REACTIVITY:	Dog, Human
TESTED APPLICATIONS:	ELISA, IHC-P, WB
APPLICATIONS:	ELISA: antibody detection limit dilution 1:32000. Western Blot: Approx 110kDa band observed in lysates of the cell lines Jurkat and HeLa (calculated MW of 110kDa according to NP_004512.1). Recommended concentration: 0.5-1.5ug/ml. Immunohistochemistry: In paraffin embedded Human Kidney, shows perinuclear labelling of some glomerular cells and cytoplasmic staining of renal tubules. Recommended concentration, 1-2ug/ml. Please note this data was obtained with a previous batch of EB
POSITIVE CONTROL:	1) Cat. No. 1305 - Human Kidney Tissue Lysate
IMMUNOGEN:	KIF5B antibody was raised against a 13 amino acid synthetic peptide near the C-Terminus of KIF5B.
HOST SPECIES:	Goat

Properties

PURIFICATION:	KIF5B antibody was purified from goat serum by ammonium sulphate precipitation followed by antigen affinity chromatography using the immunizing peptide.
PHYSICAL STATE:	Liquid
BUFFER:	KIF5B antibody is supplied in Tris saline, 0.02% sodium azide, pH 7.3 with 0.5% bovine serum albumin.
CONCENTRATION:	500 ug/mL
STORAGE CONDITIONS:	Aliquot and store at -20°C. Minimize freezing and thawing.
CLONALITY:	Polyclonal
CONJUGATE:	Unconjugated

Additional Info

ALTERNATE NAMES:	KIF5B, kinesin family member 5B, KNS, KINH, KNS1, UKHC, U-KHC, kinesin 1 (110-120kD)
ACCESSION NO.:	NP_004512.1

PROTEIN GI NO.: 4758648

OFFICIAL SYMBOL: KIF5B

GENE ID: 3799

Background

REFERENCES: 1) Semiz S, Park JG, Nicoloso SM, Furcinitti P, Zhang C, Chawla A, Leszyk J, Czech MP Conventional kinesin KIF5B mediates insulin-stimulated GLUT4 movements on microtubules EMBO J. 2003 May 15;22(10):2387-99

FOR RESEARCH USE ONLY

December 13, 2016