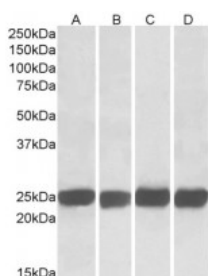


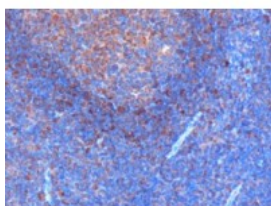


GRB2 Antibody

CATALOG NUMBER: 45-066



Western Blot (0.05ug/ml) staining of Mouse (A+C) and Rat (B+D) Brain (A+B) and Spleen (C+D) lysates (35ug total protein in RIPA buffer). Primary incubated for 1 hour. Detected by western blot using chemiluminescence.



Immunohistochemistry (0.3ug/ml) staining of paraffin embedded Human Tonsil. Microwaved antigen retrieval with citrate buffer pH6, HRP-staining.



Western Blot (0.05ug/ml) staining of Human Thymus (A) and Molt4 (B) lysates (35ug total protein in RIPA buffer). Primary incubated for 1 hour. Detected by western blot using chemiluminescence.

Specifications

SPECIES REACTIVITY:	Human, Mouse, Pig, Rat
TESTED APPLICATIONS:	ELISA, IHC-P, WB
APPLICATIONS:	ELISA: antibody detection limit dilution 1:32000. Western Blot: Approx 26kDa band observed in lysates of cell line MOLT4, of Human Thymus and of Human, Mouse, Rat, Pig Brain and Spleen lysates (calculated MW of 25.2kDa according to Human NP_002077.1 and according to Rat NP_110473.2). Recommended for use Immunohistochemistry: In paraffin embedded Human Tonsil, stains mantle zone and to a lesser extent germinal centre. Data obtained by previous batch (different goat). Recommended concentration, 0.1-0.3ug/ml. Also islets of Langerhans in paraffin embedded
POSITIVE CONTROL:	1) Cat. No. 1205 - Jurkat Cell Lysate 2) Cat. No. 1315 - Human Tonsil Tissue Lysate
SPECIFICITY:	This antibody is expected to recognize both reported isoforms (NP_002077.1 and NP_987102.1).
IMMUNOGEN:	GRB2 antibody was raised against a 12 amino acid synthetic peptide near the C-Terminus of GRB2.
HOST SPECIES:	Goat

Properties

PURIFICATION:	GRB2 antibody was purified from goat serum by ammonium sulphate precipitation followed by antigen affinity chromatography using the immunizing peptide.
PHYSICAL STATE:	Liquid
BUFFER:	GRB2 antibody is supplied in Tris saline, 0.02% sodium azide, pH 7.3 with 0.5% bovine serum albumin.
CONCENTRATION:	500 ug/mL
STORAGE CONDITIONS:	Aliquot and store at -20°C. Minimize freezing and thawing.
CLONALITY:	Polyclonal
CONJUGATE:	Unconjugated

Additional Info

ALTERNATE NAMES:	GRB2, growth factor receptor-bound protein 2, ASH, ASH protein, EGFRBP-GRB2, Grb3-3, MST084, MSTP084, HT027, abundant SRC homology, epidermal growth factor receptor-binding protein GRB2, growth factor receptor-bound protein 3
ACCESSION NO.:	NP_002077.1, NP_987102.1
PROTEIN GI NO.:	4504111
OFFICIAL SYMBOL:	GRB2
GENE ID:	2885

Background

REFERENCES:	1) Lowenstein EJ, Daly RJ, Batzer AG, Li W, Margolis B, Lammers R, Ullrich A, Skolnik EY, Bar-Sagi D, Schlessinger J. The SH2 and SH3 domain-containing protein GRB2 links receptor tyrosine kinases to ras signaling. Cell. 1992 Aug 7;70(3):431-42.
--------------------	---

FOR RESEARCH USE ONLY

December 13, 2016