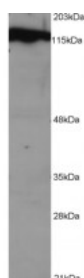




DDB1 Antibody

CATALOG NUMBER: 45-048



Western Blot (1 ug/ml) staining of NSO lysate (1E5 cells per lane). Detected by western blot using chemiluminescence.

Specifications

SPECIES REACTIVITY:	Human, Mouse, Pig
TESTED APPLICATIONS:	ELISA, WB
APPLICATIONS:	ELISA: antibody detection limit dilution 1:32000. Western Blot: Approx 130kDa band seen in HeLa, Jurkat and NSO (mouse) cell lysates. Recommended for use at 0.5-1.5 ug/ml.
POSITIVE CONTROL:	1) NSO Lysate
IMMUNOGEN:	DDB1 antibody was raised against a 13 amino acid synthetic peptide near the C-Terminus of DDB1.
HOST SPECIES:	Goat

Properties

PURIFICATION:	DDB1 antibody was purified from goat serum by ammonium sulphate precipitation followed by antigen affinity chromatography using the immunizing peptide.
PHYSICAL STATE:	Liquid
BUFFER:	DDB1 antibody is supplied in Tris saline, 0.02% sodium azide, pH 7.3 with 0.5% bovine serum albumin.
CONCENTRATION:	500 ug/mL
STORAGE CONDITIONS:	Aliquot and store at -20°C. Minimize freezing and thawing.
CLONALITY:	Polyclonal
CONJUGATE:	Unconjugated

Additional Info

ALTERNATE NAMES:	DDB1, damage-specific DNA binding protein 1, 127 kDa, DDBA, XAP1, XPCE, XPE-BF, UV-DDB1, DDB p127 subunit, damage-specific DNA binding protein 1 (127kD)
ACCESSION NO.:	NP_001914
PROTEIN GI NO.:	148529014
OFFICIAL SYMBOL:	DDB1
GENE ID:	1642

Background

REFERENCES: 1) Dualan R, Brody T, Keeney S, Nichols AF, Admon A, Linn S. Chromosomal localization and cDNA cloning of the genes (DDB1 and DDB2) for the p127 and p48 subunits of a human damage-specific DNA binding protein. Genomics 1995 Sep 1;29(1):62-9

FOR RESEARCH USE ONLY

December 13, 2016