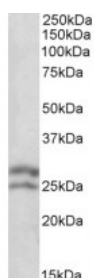




## BCL2 Antibody

CATALOG NUMBER: 45-020



Western Blot (0.1ug/ml) staining of Human Lymph lysate (35ug protein in RIPA buffer). Primary incubation was 1 hour. Detected by chemiluminescence.

### Specifications

<b>SPECIES REACTIVITY:</b>	Human
<b>TESTED APPLICATIONS:</b>	ELISA, WB
<b>APPLICATIONS:</b>	ELISA: antibody detection limit dilution 1:64000. Western Blot: Approx 27+25kDa band observed in Human Lymph lysates (calculated MW of 26.3kDa according to NP_000624.2 and of 22.2kDa according to NP_000648.2). Recommended concentration: 0.1-0.3ug/ml.
<b>POSITIVE CONTROL:</b>	1) Cat. No. 1369 - Human Lymph Node Tissue Lysate
<b>SPECIFICITY:</b>	This antibody is expected to recognise both reported isoforms (NP_000624; NP_000648)
<b>IMMUNOGEN:</b>	BCL2 antibody was raised against a 16 amino acid synthetic peptide near the N-Terminus of BCL2.
<b>HOST SPECIES:</b>	Goat

### Properties

<b>PURIFICATION:</b>	BCL2 antibody was purified from goat serum by ammonium sulphate precipitation followed by antigen affinity chromatography using the immunizing peptide.
<b>PHYSICAL STATE:</b>	Liquid
<b>BUFFER:</b>	BCL2 antibody is supplied in Tris saline, 0.02% sodium azide, pH 7.3 with 0.5% bovine serum albumin.
<b>CONCENTRATION:</b>	500 ug/mL
<b>STORAGE CONDITIONS:</b>	Aliquot and store at -20°C. Minimize freezing and thawing.
<b>CLONALITY:</b>	Polyclonal
<b>CONJUGATE:</b>	Unconjugated

### Additional Info

<b>ALTERNATE NAMES:</b>	BCL2, Bcl-2, B-cell CLL/lymphoma 2, PPP1R50
<b>ACCESSION NO.:</b>	NP_000624, NP_000648
<b>PROTEIN GI NO.:</b>	72198189
<b>OFFICIAL SYMBOL:</b>	BCL2

GENE ID: 596

---

### Background

REFERENCES: 1) Reed JC. Double identity for proteins of the Bcl-2 family. Nature. 1997 Jun 19;387(6635):773-6. Review.

---

FOR RESEARCH USE ONLY

December 13, 2016