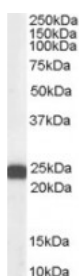




## BAG2 Antibody

CATALOG NUMBER: 45-015



Western Blot (0.3ug/ml) staining of HeLa lysate (35ug protein in RIPA buffer).  
Primary incubation was 1 hour. Detected by chemiluminescence.

### Specifications

<b>SPECIES REACTIVITY:</b>	Human
<b>TESTED APPLICATIONS:</b>	ELISA, WB
<b>APPLICATIONS:</b>	ELISA: antibody detection limit dilution 1:8000. Western Blot: Approx 25kDa band observed in Human HeLa lysates (calculated MW of 23.7kDa according to NP_004273.1). Recommended concentration: 0.1-0.3ug/ml.
<b>POSITIVE CONTROL:</b>	1) Cat. No. 1201 - HeLa Cell Lysate
<b>IMMUNOGEN:</b>	BAG2 antibody was raised against a 14 amino acid synthetic peptide near the C-Terminus of BAG2.
<b>HOST SPECIES:</b>	Goat

### Properties

<b>PURIFICATION:</b>	BAG2 antibody was purified from goat serum by ammonium sulphate precipitation followed by antigen affinity chromatography using the immunizing peptide.
<b>PHYSICAL STATE:</b>	Liquid
<b>BUFFER:</b>	BAG2 antibody is supplied in Tris saline, 0.02% sodium azide, pH 7.3 with 0.5% bovine serum albumin.
<b>CONCENTRATION:</b>	500 ug/mL
<b>STORAGE CONDITIONS:</b>	Aliquot and store at -20°C. Minimize freezing and thawing.
<b>CLONALITY:</b>	Polyclonal
<b>CONJUGATE:</b>	Unconjugated

### Additional Info

<b>ALTERNATE NAMES:</b>	BAG2, BCL2-associated athanogene 2, BAG-2, BAG-family molecular chaperone regulator-2, dJ41711.2
<b>ACCESSION NO.:</b>	NP_004273.1
<b>PROTEIN GI NO.:</b>	4757834
<b>OFFICIAL SYMBOL:</b>	BAG2
<b>GENE ID:</b>	9532

## Background

**REFERENCES:** 1) Dai Q, Qian SB, Li HH, McDonough H, Borchers C, Huang D, Takayama S, Younger JM, Ren HY, Cyr DM, Patterson C. Regulation of the cytoplasmic quality control protein degradation pathway by BAG2. J Biol Chem. 2005 Nov 18;280(46):38673-81. Epub 2005 Sep 16.

---

**FOR RESEARCH USE ONLY**

December 13, 2016