

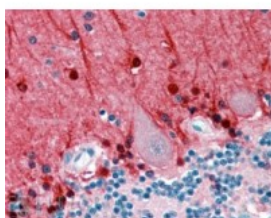


Amphiphysin Antibody

CATALOG NUMBER: 45-006



Western Blot (0.5ug/ml) staining of mouse brain lysate (35ug protein in RIPA buffer). Primary incubation was 1 hour. Detected by chemiluminescence.



Immunohistochemistry (2.5ug/ml) staining of paraffin embedded Human Cerebellum. Steamed antigen retrieval with citrate buffer pH 6, AP-staining.

Specifications

SPECIES REACTIVITY:	Human, Mouse
TESTED APPLICATIONS:	ELISA, IHC-P, WB
APPLICATIONS:	ELISA: antibody detection limit dilution 1:16000. Western Blot: Approx 125kDa band observed in mouse brain lysates (calculated MW of 76.3kDa according to NP_001626.1). The observed molecular weight corresponds to earlier findings in literature with different antibodies (Wigge et al, Mol Biol Cell. 1997 Immunohistochemistry: In paraffin embedded Human Cerebellum shows nuclear and fibrous staining. Recommended concentration, 2-4ug/ml.
POSITIVE CONTROL:	1) Cat. No. 1403 - Mouse Brain Tissue Lysate
SPECIFICITY:	This antibody is expected to recognise both reported isoforms (NP_001626.1 and NP_647477.1).
IMMUNOGEN:	Amphiphysin antibody was raised against a 12 amino acid synthetic peptide near the internal region of Amphiphysin.
HOST SPECIES:	Goat

Properties

PURIFICATION:	Amphiphysin antibody was purified from goat serum by ammonium sulphate precipitation followed by antigen affinity chromatography using the immunizing peptide.
PHYSICAL STATE:	Liquid
BUFFER:	Amphiphysin antibody is supplied in Tris saline, 0.02% sodium azide, pH 7.3 with 0.5% bovine serum albumin.
CONCENTRATION:	500 ug/mL
STORAGE CONDITIONS:	Aliquot and store at -20°C. Minimize freezing and thawing.
CLONALITY:	Polyclonal
CONJUGATE:	Unconjugated

Additional Info

ALTERNATE NAMES:	AMPH, amphiphysin (Stiff-Man syndrome with breast cancer 128 kDa autoantigen), HGNC:471, AMPH1,
-------------------------	---

amphiphysin, amphiphysin (Stiff-Mann syndrome with breast cancer 128kD autoantigen)

ACCESSION NO.: NP_001626.1, NP_647477.1

PROTEIN GI NO.: 4502081

OFFICIAL SYMBOL: AMPH

GENE ID: 273

Background

REFERENCES: 1) Sommer C, Weishaupt A, Brinkhoff J, Biko L, Wessig C, Gold R, Toyka KV. Paraneoplastic stiff-person syndrome: passive transfer to rats by means of IgG antibodies to amphiphysin. Lancet. 2005 Apr;365(9468):1406-11.

FOR RESEARCH USE ONLY

December 13, 2016