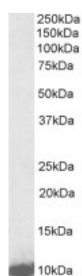




LSM2 Antibody

CATALOG NUMBER: 43-057



Western Blot (1ug/ml) staining of K562 lysate (35ug protein in RIPA buffer). Primary incubation was 1 hour. Detected by chemiluminescence.

Specifications

SPECIES REACTIVITY:	Human, Mouse
TESTED APPLICATIONS:	ELISA, WB
APPLICATIONS:	ELISA: antibody detection limit dilution 1:2000. Western Blot: Approx 10kDa band observed in lysates of cell line K562 and NIH3T3 (calculated MW of 10kDa according to NP_067000.1). Recommended concentration: 1-3ug/ml.
POSITIVE CONTROL:	1) Cat. No. 1204 - K562 Cell Lysate
PREDICTED MOLECULAR WEIGHT:	Approx 10 kDa
IMMUNOGEN:	LSM2 antibody was raised against a 14 amino acid peptide near the internal region of LSM2 (aa33-46).
HOST SPECIES:	Goat

Properties

PURIFICATION:	LSM2 antibody was purified from goat serum by ammonium sulphate precipitation followed by antigen affinity chromatography using the immunizing peptide.
PHYSICAL STATE:	Liquid
BUFFER:	LSM2 antibody is supplied in Tris saline, 0.02% sodium azide, pH 7.3 with 0.5% bovine serum albumin.
CONCENTRATION:	500 ug/mL
STORAGE CONDITIONS:	Aliquot and store at -20°C. Minimize freezing and thawing.
CLONALITY:	Polyclonal
CONJUGATE:	Unconjugated

Additional Info

ALTERNATE NAMES:	C6orf28, G7b, LSM2, LSM2 homolog, U6 small nuclear RNA associated (S. cerevisiae), OTTHUMP00000029159, protein G7b, small nuclear ribonuclear protein D homolog, snRNP, snRNP core Sm-like protein Sm-x5, U6 snRNA-associated Sm-like protein LSM2, YBL026W, C6orf28, G7B
ACCESSION NO.:	NP_067000.1

PROTEIN GI NO.: 10863977

OFFICIAL SYMBOL: LSM2

GENE ID: 57819

Background

FOR RESEARCH USE ONLY

December 13, 2016