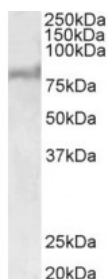




ABCD2 Antibody

CATALOG NUMBER: 43-053



Western Blot (1ug/ml) staining of Human Liver lysate (35ug protein in RIPA buffer). Primary incubation was 1 hour. Detected by chemiluminescence.

Specifications

SPECIES REACTIVITY:	Human
TESTED APPLICATIONS:	ELISA, WB
APPLICATIONS:	ELISA: antibody detection limit dilution 1:32000. Western Blot: Approx 80kDa band observed in Human Liver lysates (calculated MW of 83.2kDa according to NP_005155.1). Recommended concentration: 0.5-2ug/ml.
POSITIVE CONTROL:	1) Cat. No. 1304 - Human Liver Tissue Lysate
PREDICTED MOLECULAR WEIGHT:	Approx 80 kDa
SPECIFICITY:	No cross-reactivity expected with ABCD1.
IMMUNOGEN:	ABCD2 antibody was raised against a 14 amino acid peptide near the internal region of ABCD2 (aa460-473).
HOST SPECIES:	Goat

Properties

PURIFICATION:	ABCD2 antibody was purified from goat serum by ammonium sulphate precipitation followed by antigen affinity chromatography using the immunizing peptide.
PHYSICAL STATE:	Liquid
BUFFER:	ABCD2 antibody is supplied in Tris saline, 0.02% sodium azide, pH 7.3 with 0.5% bovine serum albumin.
CONCENTRATION:	500 ug/mL
STORAGE CONDITIONS:	Aliquot and store at -20°C. Minimize freezing and thawing.
CLONALITY:	Polyclonal
CONJUGATE:	Unconjugated

Additional Info

ALTERNATE NAMES:	ABC39, ABCD2, adrenoleukodystrophy-like 1, adrenoleukodystrophy-related protein, ALDL1, ALDR, ALDRP, ATP-binding cassette sub-family D member 2, ATP-binding cassette, sub-family D (ALD), member 2, hALDR, ALD1
ACCESSION NO.:	NP_005155.1

PROTEIN GI NO.:	9945308
OFFICIAL SYMBOL:	ABCD2
GENE ID:	225

Background

FOR RESEARCH USE ONLY

December 13, 2016