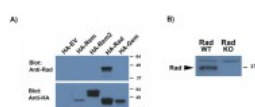




## RRAD Antibody

CATALOG NUMBER: 43-008



A) Antibody (0.5ug/ml) staining of HEK293 lysates overexpressing several HA-tagged Mouse GTPases, including Rrad (10ug protein in RIPA buffer) and compared with an HA-specific antibody. B): Antibody (0.5ug/ml) staining of WT and KO lysates of Mouse Heart

### Specifications

<b>SPECIES REACTIVITY:</b>	Mouse
<b>TESTED APPLICATIONS:</b>	ELISA, WB
<b>APPLICATIONS:</b>	ELISA: antibody detection limit dilution 1:64000. Western Blot: Approx 37kDa band observed in Mouse Heart lysates and no 37kDa in the KO lysates (calculated MW of 33.2kDa according to mouse NP_062636.2 and human NP_004156.1). There is some non-specific background, we call for caution when used for othe
<b>POSITIVE CONTROL:</b>	1) Cat. No. 1210 - 293 Cell Lysate
<b>PREDICTED MOLECULAR WEIGHT:</b>	Approx 37 kDa
<b>SPECIFICITY:</b>	Reported variants represent identical protein: NP_004156.1, NP_001122322.1
<b>IMMUNOGEN:</b>	RRAD antibody was raised against a 13 amino acid peptide near the internal region of RRAD (aa36-48).
<b>HOST SPECIES:</b>	Goat

### Properties

<b>PURIFICATION:</b>	RRAD antibody was purified from goat serum by ammonium sulphate precipitation followed by antigen affinity chromatography using the immunizing peptide.
<b>PHYSICAL STATE:</b>	Liquid
<b>BUFFER:</b>	RRAD antibody is supplied in Tris saline, 0.02% sodium azide, pH 7.3 with 0.5% bovine serum albumin.
<b>CONCENTRATION:</b>	500 ug/mL
<b>STORAGE CONDITIONS:</b>	Aliquot and store at -20°C. Minimize freezing and thawing.
<b>CLONALITY:</b>	Polyclonal
<b>CONJUGATE:</b>	Unconjugated

### Additional Info

<b>ALTERNATE NAMES:</b>	GTP-binding protein RAD, OTTHUMP00000174805, RAD, RAD1, RAS (RAD and GEM) like GTP binding 3, ras associated with diabetes, Ras-related associated with diabetes, REM3, RRAD
<b>ACCESSION NO.:</b>	NP_004156.1
<b>PROTEIN GI NO.:</b>	4759054
<b>OFFICIAL SYMBOL:</b>	RRAD
<b>GENE ID:</b>	6236

## Background

FOR RESEARCH USE ONLY

December 13, 2016