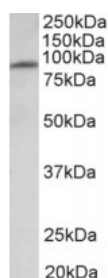




## MFSD6 Antibody

CATALOG NUMBER: 43-002



Western Blot (1ug/ml) staining of Human Heart lysate (35ug protein in RIPA buffer). Primary incubation was 1 hour. Detected by chemiluminescence.

### Specifications

<b>SPECIES REACTIVITY:</b>	Human
<b>TESTED APPLICATIONS:</b>	ELISA, WB
<b>APPLICATIONS:</b>	ELISA: antibody detection limit dilution 1:16000. Western Blot: Approx 90kDa band observed in Human Heart lysates (calculated MW of 88.1kDa according to NP_060164.3). Recommended concentration: 1-3ug/ml.
<b>POSITIVE CONTROL:</b>	1) Cat. No. 1305 - Human Kidney Tissue Lysate
<b>PREDICTED MOLECULAR WEIGHT:</b>	Approx 90 kDa
<b>SPECIFICITY:</b>	The immunizng peptide is thought to represent an extracellular domain.
<b>IMMUNOGEN:</b>	MFSD6 antibody was raised against a 12 amino acid synthetic peptide near the internal region of MFSD6.
<b>HOST SPECIES:</b>	Goat

### Properties

<b>PURIFICATION:</b>	Antibody was purified from goat serum by ammonium sulphate precipitation followed by antigen affinity chromatography using the immunizing peptide.
<b>PHYSICAL STATE:</b>	Liquid
<b>BUFFER:</b>	MFSD6 antibody is supplied in Tris saline, 0.02% sodium azide, pH 7.3 with 0.5% bovine serum albumin.
<b>CONCENTRATION:</b>	500 ug/mL
<b>STORAGE CONDITIONS:</b>	Aliquot and store at -20°C. Minimize freezing and thawing.
<b>CLONALITY:</b>	Polyclonal
<b>CONJUGATE:</b>	Unconjugated

### Additional Info

<b>ALTERNATE NAMES:</b>	MFSD6, OTTHUMP00000205546, OTTHUMP00000163510, MMR2, major facilitator superfamily domain-containing protein 6, major facilitator superfamily domain containing 6, macrophage MHC receptor 2, macrophage MHC class I receptor 2 homolog, hMMR2, FLJ20160
<b>ACCESSION NO.:</b>	NP_060164.3

PROTEIN GI NO.:	144953907
OFFICIAL SYMBOL:	MFSD6
GENE ID:	54842

## Background

FOR RESEARCH USE ONLY

December 13, 2016