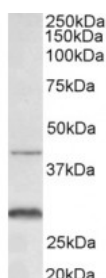




## Cxcr2 Antibody

CATALOG NUMBER: 42-981



Western Blot (0.3ug/ml) staining of Mouse Colon lysate (35ug protein in RIPA buffer). Primary incubation was 1 hour. Detected by chemiluminescence.

### Specifications

<b>SPECIES REACTIVITY:</b>	Mouse
<b>TESTED APPLICATIONS:</b>	ELISA, WB
<b>APPLICATIONS:</b>	ELISA: antibody detection limit dilution 1:128000. Western Blot: Approx 40kDa band observed in Mouse Colon lysates (calculated MW of 40.4kDa according to NP_034039.1). Recommended concentration: 0.3-1ug/ml. An additional band of unknown identity was also consistently observed at 28kDa. This band was succ
<b>POSITIVE CONTROL:</b>	1) Cat. No. 1411 - Mouse Colon Tissue Lysate
<b>PREDICTED MOLECULAR WEIGHT:</b>	Approx 40 kDa
<b>SPECIFICITY:</b>	Reported isoforms represent identical protein: NP_001548.1, NP_001161770.1. The immunizing peptide represent part of an extracellular domain.
<b>IMMUNOGEN:</b>	Cxcr2 antibody was raised against a 11 amino acid synthetic peptide near the N-Terminus of Cxcr2 (mouse).
<b>HOST SPECIES:</b>	Goat

### Properties

<b>PURIFICATION:</b>	Antibody was purified from goat serum by ammonium sulphate precipitation followed by antigen affinity chromatography using the immunizing peptide.
<b>PHYSICAL STATE:</b>	Liquid
<b>BUFFER:</b>	Cxcr2 antibody is supplied in Tris saline, 0.02% sodium azide, pH 7.3 with 0.5% bovine serum albumin.
<b>CONCENTRATION:</b>	500 ug/mL
<b>STORAGE CONDITIONS:</b>	Aliquot and store at -20°C. Minimize freezing and thawing.
<b>CLONALITY:</b>	Polyclonal
<b>CONJUGATE:</b>	Unconjugated

### Additional Info

<b>ALTERNATE NAMES:</b>	Cxcr2, mL-8RH, interleukin-8 receptor type B, interleukin 8 receptor, beta, IL-8RH, IL-8rb, IL8rb, IL8RA, IL-8R B, IL-8 receptor alpha chain, high affinity interleukin-8 receptor B, GRO/MGSA receptor, Gpcr16, CXC-R2, CXCR-
-------------------------	--

2, C-X-C chemokine receptor type 2, Cmkar2, chemokine (C-X-C) receptor 2, chemokine (C-X-C motif) receptor 2, CDw128, CD128, IL8RB

**ACCESSION NO.:** NP\_034039.1

**PROTEIN GI NO.:** 6753456

**OFFICIAL SYMBOL:** Cxcr2

**GENE ID:** 3579

## Background

FOR RESEARCH USE ONLY

December 13, 2016