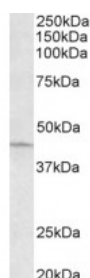


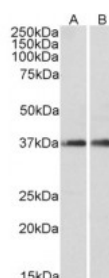


ARPC1A Antibody

CATALOG NUMBER: 42-980



Western Blot (0.3ug/ml) staining of HeLa lysate (35ug protein in RIPA buffer). Primary incubation was 1 hour. Detected by chemiluminescence.



Western Blot (0.1ug/ml) staining of fetal Mouse Brain (A) and adult Rat Brain (B) lysates (35ug protein in RIPA buffer). Primary incubation was 1 hour. Detected by chemiluminescence.

Specifications

SPECIES REACTIVITY:	Human
TESTED APPLICATIONS:	ELISA, WB
APPLICATIONS:	ELISA: antibody detection limit dilution 1:64000. Western Blot: Approx 45kDa band observed in lysates of cell line HeLa (calculated MW of 41.6kDa according to NP_006400.2). Approx 37kDa band observed in fetal Mouse Brain and adult Rat Brain lysates (calculated MW of 41.6kDa according to Mouse NP_062741).
PREDICTED MOLECULAR WEIGHT:	Approx 45 kDa
SPECIFICITY:	This antibody is expected to recognize both reported isoforms (NP_006400.2; NP_001177925.1). No cross-reactivity expected with ARPC1B.
IMMUNOGEN:	ARPC1A antibody was raised against a 13 amino acid synthetic peptide near the C-Terminus of ARPC1A.
HOST SPECIES:	Goat

Properties

PURIFICATION:	Antibody was purified from goat serum by ammonium sulphate precipitation followed by antigen affinity chromatography using the immunizing peptide.
PHYSICAL STATE:	Liquid
BUFFER:	ARPC1A antibody is supplied in Tris saline, 0.02% sodium azide, pH 7.3 with 0.5% bovine serum albumin.
CONCENTRATION:	500 ug/mL
STORAGE CONDITIONS:	Aliquot and store at -20°C. Minimize freezing and thawing.
CLONALITY:	Polyclonal
CONJUGATE:	Unconjugated

Additional Info

ALTERNATE NAMES:	ARPC1A, SOP2-like protein, SOP2L, SOP2Hs, OTTHUMP00000206034, Arc40, actin-related protein 2/3 complex subunit 1A, actin related protein 2/3 complex, subunit 1A, 41kDa, actin binding protein
-------------------------	--

(Schizosaccharomyces pombe sop2-like)

ACCESSION NO.:	NP_006400.2, NP_001177925.1
PROTEIN GI NO.:	22907052
OFFICIAL SYMBOL:	ARPC1A
GENE ID:	10552

Background

FOR RESEARCH USE ONLY

December 13, 2016