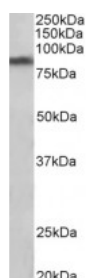




SLC6A3 Antibody

CATALOG NUMBER: 42-964



Western Blot (1ug/ml) staining of Human Substantia nigra lysate (35ug protein in RIPA buffer). Primary incubation was 1 hour. Detected by chemiluminescence.

Specifications

SPECIES REACTIVITY:	Human
TESTED APPLICATIONS:	ELISA, WB
APPLICATIONS:	ELISA: antibody detection limit dilution 1:4000. Western Blot: Approx 85kDa band observed in Human Brain (Substantia nigra) lysates (calculated MW of 68.5kDa according to NP_001035.1). The observed molecular weight corresponds to earlier findings in literature with different antibodies (Mazei-Robison e
POSITIVE CONTROL:	1) Human Substantia Nigra Lysate
PREDICTED MOLECULAR WEIGHT:	Approx 85 kDa
IMMUNOGEN:	SLC6A3 Antibody was raised against a 14 amino acid sequence near the internal region (near N-Terminus) of SLC6A3.
HOST SPECIES:	Goat

Properties

PURIFICATION:	Antibody was purified from goat serum by ammonium sulphate precipitation followed by antigen affinity chromatography using the immunizing peptide.
PHYSICAL STATE:	Liquid
BUFFER:	SLC6A3 antibody is supplied in Tris saline, 0.02% sodium azide, pH 7.3 with 0.5% bovine serum albumin.
CONCENTRATION:	500 ug/mL
STORAGE CONDITIONS:	Aliquot and store at -20°C. Minimize freezing and thawing.
CLONALITY:	Polyclonal
CONJUGATE:	Unconjugated

Additional Info

ALTERNATE NAMES:	SLC6A3, solute carrier family 6 member 3, solute carrier family 6 (neurotransmitter transporter, dopamine), member 3, sodium-dependent dopamine transporter, DAT1, DAT, DA transporter
ACCESSION NO.:	NP_001035.1

PROTEIN GI NO.: 4507041

OFFICIAL SYMBOL: SLC6A3

GENE ID: 6531

Background

FOR RESEARCH USE ONLY

December 13, 2016