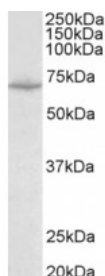




SLC6A8 Antibody

CATALOG NUMBER: 42-947



Western Blot (0.1ug/ml) staining of Mouse Heart lysate (35ug protein in RIPA buffer). Primary incubation was 1 hour. Detected by chemiluminescence.

Specifications

SPECIES REACTIVITY:	Mouse
TESTED APPLICATIONS:	ELISA, WB
APPLICATIONS:	ELISA: antibody detection limit dilution 1:8000. Western Blot: Approx 70kDa band observed in Mouse Heart, Kidney and Skeletal Muscle lysates (calculated MW of 71.0kDa according to Mouse NP_598748.1). Recommended concentration: 0.1-0.3ug/ml.
POSITIVE CONTROL:	1) Cat. No. 1401 - Mouse Heart Tissue Lysate 2) Cat. No. 1405 - Mouse Kidney Tissue Lysate 3) Cat. No. 1407 - Mouse Skeletal Muscle Tissue Lysate
PREDICTED MOLECULAR WEIGHT:	Approx 70 kDa
SPECIFICITY:	This antibody is expected to recognize all reported isoforms (NP_005620.1; NP_001136277.1; NP_001136278.1).
IMMUNOGEN:	SLC6A8 Antibody was raised against a 15 amino acid sequence near the internal region of SLC6A8.
HOST SPECIES:	Goat

Properties

PURIFICATION:	Antibody was purified from goat serum by ammonium sulphate precipitation followed by antigen affinity chromatography using the immunizing peptide.
PHYSICAL STATE:	Liquid
BUFFER:	SLC6A8 antibody is supplied in Tris saline, 0.02% sodium azide, pH 7.3 with 0.5% bovine serum albumin.
CONCENTRATION:	500 ug/mL
STORAGE CONDITIONS:	Aliquot and store at -20°C. Minimize freezing and thawing.
CLONALITY:	Polyclonal
CONJUGATE:	Unconjugated

Additional Info

ALTERNATE NAMES:	Sodium- and chloride-dependent creatine transporter 1, creatine transporter SLC6A8, creatine transporter 1, MGC87396, CT1, CRTR, CRT, solute carrier family 6 (neurotransmitter transporter, creatine), member 8, SLC6A8, CCDS1
ACCESSION NO.:	NP_005620.1, NP_001136277.1, NP_001136278.1
PROTEIN GI NO.:	5032097
OFFICIAL SYMBOL:	SLC6A8
GENE ID:	6535

Background

FOR RESEARCH USE ONLY

December 13, 2016