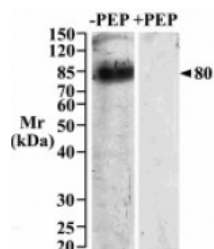


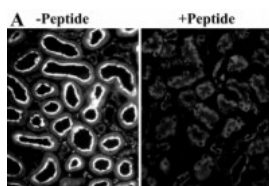


Slc5a1 Antibody

CATALOG NUMBER: 42-919



Western blot staining of Brush-border membranes from Rat Kidney using Slc5a1 antibody at 2.5 ug/mL. Primary incubation was 1 hour. Detected by chemiluminescence.



Immunohistochemical staining of cryosections of Rat Kidney using Slc5a1 antibody (25 ug/mL). Detection by CY3 fluorescence.

Specifications

SPECIES REACTIVITY:	Rat
TESTED APPLICATIONS:	ELISA, IHC-P, WB
APPLICATIONS:	ELISA: antibody detection limit dilution 1:4000. Western Blot: Approx 75-80kDa band observed in isolated Brush Border Membranes (BBM) of female Rat Kidney and approx 80kDa in BBM of female Rat Small Intestine (calculated MW of 73.1kDa according to NP_037165.1). Recommended concentration: 1-3ug/ml. Data Immunohistochemistry: Cryosections of paraformaldehyde fixed Rat Kidney shows strong staining of the brush-border in proximal straight tubules (S3 segments). Cryosections of paraformaldehyde fixed Rat Small Intestines shows staining of the brush-border
POSITIVE CONTROL:	1) Cat. No. 1465 - Rat Kidney Tissue Lysate
IMMUNOGEN:	Slc5a1 Antibody was raised against a 15 amino acid sequence near the internal region of Slc5a1 (rat).
HOST SPECIES:	Goat

Properties

PURIFICATION:	Antibody was purified from goat serum by ammonium sulphate precipitation followed by antigen affinity chromatography using the immunizing peptide.
PHYSICAL STATE:	Liquid
BUFFER:	Slc5a1 antibody is supplied in Tris saline, 0.02% sodium azide, pH 7.3 with 0.5% bovine serum albumin.
CONCENTRATION:	500 ug/mL
STORAGE CONDITIONS:	Aliquot and store at -20°C. Minimize freezing and thawing.
CLONALITY:	Polyclonal
CONJUGATE:	Unconjugated

Additional Info

ALTERNATE NAMES:	Slc5a1, Solute carrier family 5, member alpha 1 (Na ⁺ /glucose cotransporter), solute carrier family 5, member 1, solute carrier family 5 (sodium/glucose cotransporter), sodium/glucose cotransporter 1, Sglt1, Na ⁺ /glucose
-------------------------	--

cotransporter 1, MGC93553, high affinity sodium-glucose cotransporter

ACCESSION NO.: NP_037165.1

PROTEIN GI NO.: 6981552

OFFICIAL SYMBOL: Slc5a1

GENE ID: 25552 (rat);

Background

FOR RESEARCH USE ONLY

December 13, 2016