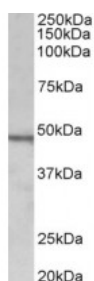




CHIT1 Antibody

CATALOG NUMBER: 42-918



Western Blot (1ug/ml) staining of Daudi lysate (35ug protein in RIPA buffer). Primary incubation was 1 hour. Detected by chemiluminescence.

Specifications

SPECIES REACTIVITY:	Human
TESTED APPLICATIONS:	ELISA, WB
APPLICATIONS:	ELISA: antibody detection limit dilution 1:2000. Western Blot: Approx 48kDa band observed in lysates of cell line Daudi (calculated MW of 51.7kDa according to NP_003456.1). Recommended concentration: 1-3ug/ml.
POSITIVE CONTROL:	1) Cat. No. 1224 - Daudi Cell Lysate
PREDICTED MOLECULAR WEIGHT:	Approx 48 kDa
IMMUNOGEN:	CHIT1 Antibody was raised against a 15 amino acid sequence near the internal region (near C-Terminus) of CHIT1 (aa409-423).
HOST SPECIES:	Goat

Properties

PURIFICATION:	Antibody was purified from goat serum by ammonium sulphate precipitation followed by antigen affinity chromatography using the immunizing peptide.
PHYSICAL STATE:	Liquid
BUFFER:	CHIT1 antibody is supplied in Tris saline, 0.02% sodium azide, pH 7.3 with 0.5% bovine serum albumin.
CONCENTRATION:	500 ug/mL
STORAGE CONDITIONS:	Aliquot and store at -20°C. Minimize freezing and thawing.
CLONALITY:	Polyclonal
CONJUGATE:	Unconjugated

Additional Info

ALTERNATE NAMES:	CHIT1, plasma methylumbelliferyl tetra-N-acetylchitotetraoside hydrolase, OTTHUMP00000217085, OTTHUMP00000217084, OTTHUMP00000217083, MGC125322, FLJ00314, chitotriosidase-1, chitinase-1, chitinase 1 (chitotriosidase), CHIT, CHI3, CHITD
ACCESSION NO.:	NP_003456.1

PROTEIN GI NO.: 4502809

OFFICIAL SYMBOL: CHIT1

GENE ID: 1118

Background

FOR RESEARCH USE ONLY

December 13, 2016