

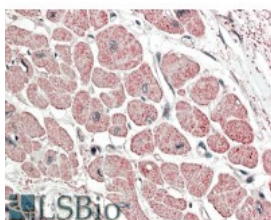


## NPPA Antibody

CATALOG NUMBER: 42-900



Western Blot (0.01ug/ml) staining of Mouse Heart lysate (35ug protein in RIPA buffer). Primary incubation was 1 hour. Detected by chemiluminescence.



Immunohistochemistry (5ug/ml) staining of paraffin embedded Human Heart. Steamed antigen retrieval with citrate buffer pH 6, AP-staining.

### Specifications

<b>SPECIES REACTIVITY:</b>	Human, Mouse, Rat
<b>TESTED APPLICATIONS:</b>	ELISA, IHC-P, WB
<b>APPLICATIONS:</b>	ELISA: antibody detection limit dilution 1:32000. Western Blot: Approx 19kDa band observed in Mouse and Rat Heart lysates (calculated MW of 16.4kDa according to Human precursor NP_006163.1 and 16.6kDa according to Mouse precursor NP_032751.1). Recommended concentration: 0.01-0.03ug/ml. Immunohistochemistry: In paraffin embedded Human Heart shows vesicular staining inside the cardiac fibrils, accumulating towards the cell membrane. Recommended concentration, 5-10ug/ml.
<b>POSITIVE CONTROL:</b>	1) Cat. No. 1401 - Mouse Heart Tissue Lysate 2) Cat. No. 1461 - Rat Heart Tissue Lysate
<b>PREDICTED MOLECULAR WEIGHT:</b>	Approx 19 kDa
<b>SPECIFICITY:</b>	The immunizing peptide represents aa137-150 of the precursor NPPA.
<b>IMMUNOGEN:</b>	NPPA Antibody was raised against a 14 amino acid sequence near the C-Terminus of NPPA.
<b>HOST SPECIES:</b>	Goat

### Properties

<b>PURIFICATION:</b>	Antibody was purified from goat serum by ammonium sulphate precipitation followed by antigen affinity chromatography using the immunizing peptide.
<b>PHYSICAL STATE:</b>	Liquid
<b>BUFFER:</b>	NPPA antibody is supplied in Tris saline, 0.02% sodium azide, pH 7.3 with 0.5% bovine serum albumin.
<b>CONCENTRATION:</b>	500 ug/mL
<b>STORAGE CONDITIONS:</b>	Aliquot and store at -20°C. Minimize freezing and thawing.
<b>CLONALITY:</b>	Polyclonal
<b>CONJUGATE:</b>	Unconjugated

### Additional Info

<b>ALTERNATE NAMES:</b>	NPPA, prepronatriodilatin, PND, natriuretic peptide precursor A, natriuretic peptide A, CDD-ANF, cardionatrin, atriopeptin, atrial natriuretic factor, ATRN, ANP, ANFOfficial Symbol: NPPA
<b>ACCESSION NO.:</b>	NP_006163.1
<b>PROTEIN GI NO.:</b>	23510319
<b>OFFICIAL SYMBOL:</b>	NPPA
<b>GENE ID:</b>	4878

## Background

FOR RESEARCH USE ONLY

December 13, 2016