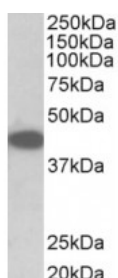




## Trib1 Antibody

CATALOG NUMBER: 42-869



Western Blot (0.1ug/ml) staining of NIH3T3 lysate (35ug protein in RIPA buffer).  
Primary incubation was 1 hour. Detected by chemiluminescence.

### Specifications

<b>SPECIES REACTIVITY:</b>	Mouse
<b>TESTED APPLICATIONS:</b>	ELISA, WB
<b>APPLICATIONS:</b>	ELISA: antibody detection limit dilution 1:8000. Western Blot: Approx 42kDa band observed in lysates of cell line NIH3T3 (calculated MW of 41.3kDa according to NP_653132.1). Recommended concentration: 0.1-0.3ug/ml.
<b>POSITIVE CONTROL:</b>	1) Cat. No. 1282 - 3T3 (NIH) Cell Lysate
<b>IMMUNOGEN:</b>	Trib1 antibody was raised against a 14 amino acid synthetic peptide near the internal region of Trib1 (aa 304-317).
<b>HOST SPECIES:</b>	Goat

### Properties

<b>PURIFICATION:</b>	Antibody was purified from goat serum by ammonium sulphate precipitation followed by antigen affinity chromatography using the immunizing peptide.
<b>PHYSICAL STATE:</b>	Liquid
<b>BUFFER:</b>	Trib1 antibody is supplied in Tris saline, 0.02% sodium azide, pH 7.3 with 0.5% bovine serum albumin.
<b>CONCENTRATION:</b>	500 ug/mL
<b>STORAGE CONDITIONS:</b>	Aliquot and store at -20°C. Minimize freezing and thawing.
<b>CLONALITY:</b>	Polyclonal
<b>CONJUGATE:</b>	Unconjugated

### Additional Info

<b>ALTERNATE NAMES:</b>	Trib1, tribbles homolog 1 (Drosophila), tribbles homolog 1, TRB-1, Trb1, A530090O15Rik, C8FW, GIG2, TRB1
<b>ACCESSION NO.:</b>	NP_653132.1
<b>PROTEIN GI NO.:</b>	21362355
<b>OFFICIAL SYMBOL:</b>	Trib1
<b>GENE ID:</b>	10221

