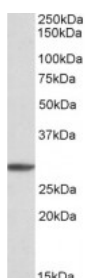


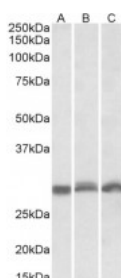


## PSMA4 Antibody

CATALOG NUMBER: 42-829



Western Blot (1ug/ml) staining of K562 cell lysate (35ug protein in RIPA buffer). Primary incubation was 1 hour. Detected by chemiluminescence.



Western Blot (0.3ug/ml) staining of NIH3T3 (A), Mouse Spleen (B), Rat Spleen (C)) lysates (35ug protein in RIPA buffer). Primary incubation was 1 hour. Detected by chemiluminescence.

### Specifications

<b>SPECIES REACTIVITY:</b>	Human, Mouse, Rat
<b>TESTED APPLICATIONS:</b>	ELISA, WB
<b>APPLICATIONS:</b>	ELISA: antibody detection limit dilution 1:4000. Western Blot: Approx 28kDa band observed in lysates of cell lines K562, NIH3T3 and in lysates of Human Tonsil, Human Peripheral Blood Mononucleocytes and in Mouse and Rat Spleen (calculated MW of 29.5kDa according to NP_002780.1). Recommended concentrati
<b>POSITIVE CONTROL:</b>	1) Cat. No. 1204 - K562 Cell Lysate 2) Cat. No. 1315 - Human Tonsil Tissue Lysate
<b>SPECIFICITY:</b>	This antibody is expected to recognize both reported isoforms (NP_002780.1; NP_001096138.1). Reported variants represent identical protein: NP_002780.1, NP_001096137.1
<b>IMMUNOGEN:</b>	PSMA4 antibody was raised against an 11 amino acid synthetic peptide near the internal region of PSMA4.
<b>HOST SPECIES:</b>	Goat

### Properties

<b>PURIFICATION:</b>	Antibody was purified from goat serum by ammonium sulphate precipitation followed by antigen affinity chromatography using the immunizing peptide.
<b>PHYSICAL STATE:</b>	Liquid
<b>BUFFER:</b>	PSMA4 antibody is supplied in Tris saline, 0.02% sodium azide, pH 7.3 with 0.5% bovine serum albumin.
<b>CONCENTRATION:</b>	500 ug/mL
<b>STORAGE CONDITIONS:</b>	Aliquot and store at -20°C. Minimize freezing and thawing.
<b>CLONALITY:</b>	Polyclonal
<b>CONJUGATE:</b>	Unconjugated

### Additional Info

<b>ALTERNATE NAMES:</b>	PSMA4, PSC9, proteasome subun, proteasome component C9, proteasome alpha 4 subunit, proteasome (prosome, macropain) subunit, alpha type, 4, multicatalytic endopeptidase complex subunit C9, MGC24813,
-------------------------	--------------------------------------------------------------------------------------------------------------------------------------------------------------------------------------------------------

MGC12467, MGC111191, macropain subunit C9, HsT17706, HC9

**ACCESSION NO.:** NP\_002780.1, NP\_001096138.1

**PROTEIN GI NO.:** 4506185

**OFFICIAL SYMBOL:** PSMA4

**GENE ID:** 5685

## Background

FOR RESEARCH USE ONLY

December 13, 2016