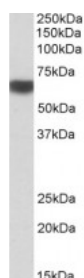


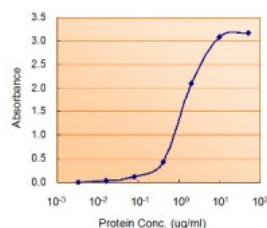


## PRKAA2 Antibody

CATALOG NUMBER: 42-828



Western Blot (1ug/ml) staining of Human Liver lysate (35ug protein in RIPA buffer). Primary incubation was 1 hour. Detected by chemiluminescence.



Antibody used in Sandwich ELISA as detection antibody (1.5ug/ml).



Western Blot (0.3ug/ml) staining of Mouse (A) and Rat (B) Heart lysate (35ug protein in RIPA buffer). Primary incubation was 1 hour. Detected by chemiluminescence.

### Specifications

<b>SPECIES REACTIVITY:</b>	Human, Mouse, Rat
<b>TESTED APPLICATIONS:</b>	EIA, ELISA, WB
<b>APPLICATIONS:</b>	ELISA: antibody detection limit dilution 1:16000. Western Blot: Approx 65kDa band observed in Human Heart and Liver lysates and in Mouse and Rat Heart lysates (calculated MW of 62.3kDa according to NP_006243.2). Recommended concentration: 0.3-1ug/ml. Enzyme immunoassay: Sandwich-type ELISA with increasing amount of recombinant PRKAA2 captured by a rabbit antibody. Recommended reporter concentration: 1.5-3ug/ml
<b>POSITIVE CONTROL:</b>	1) Cat. No. 1301 - Human Heart Tissue Lysate 2) Cat. No. 1304 - Human Liver Tissue Lysate
<b>IMMUNOGEN:</b>	PRKAA2 antibody was raised against an 11 amino acid synthetic peptide near the internal region of PRKAA2.
<b>HOST SPECIES:</b>	Goat

### Properties

<b>PURIFICATION:</b>	Antibody was purified from goat serum by ammonium sulphate precipitation followed by antigen affinity chromatography using the immunizing peptide.
<b>PHYSICAL STATE:</b>	Liquid
<b>BUFFER:</b>	PRKAA2 antibody is supplied in Tris saline, 0.02% sodium azide, pH 7.3 with 0.5% bovine serum albumin.
<b>CONCENTRATION:</b>	500 ug/mL
<b>STORAGE CONDITIONS:</b>	Aliquot and store at -20°C. Minimize freezing and thawing.
<b>CLONALITY:</b>	Polyclonal
<b>CONJUGATE:</b>	Unconjugated

### Additional Info

<b>ALTERNATE NAMES:</b>	PRKAA2, protein kinase, AMP-activated, alpha 2 catalytic subunit, PRKAA, AMPK-alpha-2 chain, AMPK2, AMPK, AMP-activated protein kinase alpha 2 catalytic subunit, 5'-AMP-activated protein kinase, catalytic alpha-2 chain
-------------------------	--

ACCESSION NO.: NP\_006243.2

PROTEIN GI NO.: 46877068

OFFICIAL SYMBOL: PRKAA2

GENE ID: 5563

## Background

FOR RESEARCH USE ONLY

December 13, 2016