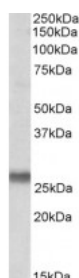




SNAP23 Antibody

CATALOG NUMBER: 42-821



Western Blot (0.1ug/ml) staining of Human Placenta lysate (35ug protein in RIPA buffer). Primary incubation was 1 hour. Detected by chemiluminescence.

Specifications

SPECIES REACTIVITY:	Human
TESTED APPLICATIONS:	ELISA, WB
APPLICATIONS:	ELISA: antibody detection limit dilution 1:8000. Western Blot: Approx 26kDa band observed in Human Placenta lysates (calculated MW of 23.4kDa according to NP_003816.2). The observed molecular weight corresponds to earlier findings with different antibodies from other commercial sources. Recommended con
POSITIVE CONTROL:	1) Cat. No. 1309 - Human Placenta Lysate
SPECIFICITY:	This antibody is expected to recognize both reported isoforms (NP_003816.2; NP_570710.1).
IMMUNOGEN:	SNAP23 antibody was raised against a 10 amino acid synthetic peptide near the internal region of SNAP23.
HOST SPECIES:	Goat

Properties

PURIFICATION:	Antibody was purified from goat serum by ammonium sulphate precipitation followed by antigen affinity chromatography using the immunizing peptide.
PHYSICAL STATE:	Liquid
BUFFER:	SNAP23 antibody is supplied in Tris saline, 0.02% sodium azide, pH 7.3 with 0.5% bovine serum albumin.
CONCENTRATION:	500 ug/mL
STORAGE CONDITIONS:	Aliquot and store at -20°C. Minimize freezing and thawing.
CLONALITY:	Polyclonal
CONJUGATE:	Unconjugated

Additional Info

ALTERNATE NAMES:	SNAP23, synaptosomal-associated protein, 23kDa, synaptosomal-associated protein 23, SNAP23B, SNAP23A, OTTHUMP00000161263, HsT17016, SNAP-23
ACCESSION NO.:	NP_003816.2, NP_570710.1
PROTEIN GI NO.:	18765729

OFFICIAL SYMBOL: SNAP23

GENE ID: 8773

Background

FOR RESEARCH USE ONLY

December 13, 2016