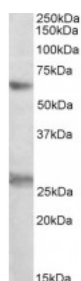




EIF2B4 Antibody

CATALOG NUMBER: 42-814



Western Blot (0.3ug/ml) staining of K562 lysate (35ug protein in RIPA buffer). Primary incubation was 1 hour. Detected by chemiluminescence.

Specifications

SPECIES REACTIVITY:	Human
TESTED APPLICATIONS:	ELISA, WB
APPLICATIONS:	ELISA: antibody detection limit dilution 1:16000. Western Blot: Approx 60kDa band observed in lysates of cell line K562 (calculated MW of 59.6kDa according to NP_751945.2). Recommended concentration: 0.3-1ug/ml. An additional band of unknown identity was also consistently observed at 26kDa. This band wa
POSITIVE CONTROL:	1) Cat. No. 1204 - K562 Cell Lysate
SPECIFICITY:	This antibody is expected to recognize all reported isoforms (NP_751945.2; NP_001029288.1; NP_056451.3).
IMMUNOGEN:	EIF2B4 antibody was raised against a 13 amino acid synthetic peptide near the internal region of EIF2B4.
HOST SPECIES:	Goat

Properties

PURIFICATION:	Antibody was purified from goat serum by ammonium sulphate precipitation followed by antigen affinity chromatography using the immunizing peptide.
PHYSICAL STATE:	Liquid
BUFFER:	EIF2B4 antibody is supplied in Tris saline, 0.02% sodium azide, pH 7.3 with 0.5% bovine serum albumin.
CONCENTRATION:	500 ug/mL
STORAGE CONDITIONS:	Aliquot and store at -20°C. Minimize freezing and thawing.
CLONALITY:	Polyclonal
CONJUGATE:	Unconjugated

Additional Info

ALTERNATE NAMES:	EIF2B4, translation initiation facto, eukaryotic translation initiation factor 2B, subunit 4 delta, 67kDa, EIF2Bdelta, eIF-2B GDP-GTP exchange factor subunit delta, EIF-2B, EIF2B, DKFZp586J0119, EIF2BD
ACCESSION NO.:	NP_751945.2, NP_001029288.1, NP_056451.3
PROTEIN GI NO.:	187607323

OFFICIAL SYMBOL: EIF2B4

GENE ID: 8890

Background

FOR RESEARCH USE ONLY

December 13, 2016