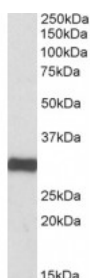




ETFA Antibody

CATALOG NUMBER: 42-809



Western Blot (0.1ug/ml) staining of Human Heart lysate (35ug protein in RIPA buffer). Primary incubation was 1 hour. Detected by chemiluminescence.

Specifications

SPECIES REACTIVITY:	Human, Mouse, Rat
TESTED APPLICATIONS:	ELISA, WB
APPLICATIONS:	ELISA: antibody detection limit dilution 1:8000. Western Blot: Approx 30kDa band observed in Human, Mouse and Rat Heart lysates (calculated MW of 30.0kDa according to NP_001121188.1). Recommended concentration: 0.05-0.2ug/ml.
POSITIVE CONTROL:	1) Cat. No. 1301 - Human Heart Tissue Lysate 2) Cat. No. 1401 - Mouse Heart Tissue Lysate 3) Cat. No. 1461 - Rat Heart Tissue Lysate
SPECIFICITY:	This antibody is expected to recognize both reported isoforms (NP_000117.1; NP_001121188.1).
IMMUNOGEN:	ETFA antibody was raised against a 13 amino acid synthetic peptide near the C-Terminus of ETFA.
HOST SPECIES:	Goat

Properties

PURIFICATION:	Antibody was purified from goat serum by ammonium sulphate precipitation followed by antigen affinity chromatography using the immunizing peptide.
PHYSICAL STATE:	Liquid
BUFFER:	ETFA antibody is supplied in Tris saline, 0.02% sodium azide, pH 7.3 with 0.5% bovine serum albumin.
CONCENTRATION:	500 ug/mL
STORAGE CONDITIONS:	Aliquot and store at -20°C. Minimize freezing and thawing.
CLONALITY:	Polyclonal
CONJUGATE:	Unconjugated

Additional Info

ALTERNATE NAMES:	ETFA, MADD, glutaric aciduria II, GA2, EMA, electron-transfer-flavoprotein, alpha polypeptide, electron transfer flavoprotein, electron transfer flavoprotein alpha-subunit
-------------------------	---

ACCESSION NO.:	NP_000117.1, NP_001121188.1
PROTEIN GI NO.:	4503607
OFFICIAL SYMBOL:	ETFA
GENE ID:	2108

Background

FOR RESEARCH USE ONLY

December 13, 2016