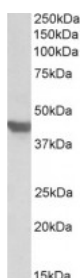




SLC2A4 Antibody

CATALOG NUMBER: 42-800



Western Blot (1ug/ml) staining of Mouse Heart lysate (35ug protein in RIPA buffer). Primary incubation was 1 hour. Detected by chemiluminescence.

Specifications

SPECIES REACTIVITY:	Mouse, Rat
TESTED APPLICATIONS:	ELISA, WB
APPLICATIONS:	ELISA: antibody detection limit dilution 1:16000. Western Blot: Approx 45kDa band observed in Mouse and Rat Heart lysates (calculated MW of 54.8kDa according to Human NP_001033.1 and Mouse NP_033230.2). The observed molecular weight corresponds to earlier findings in literature with different antibodies
POSITIVE CONTROL:	1) Cat. No. 1401 - Mouse Heart Tissue Lysate 2) Cat. No. 1461 - Rat Heart Tissue Lysate
IMMUNOGEN:	SLC2A4 antibody was raised against a 12 amino acid synthetic peptide near the C-Terminus of SLC2A4.
HOST SPECIES:	Goat

Properties

PURIFICATION:	Antibody was purified from goat serum by ammonium sulphate precipitation followed by antigen affinity chromatography using the immunizing peptide.
PHYSICAL STATE:	Liquid
BUFFER:	SLC2A4 antibody is supplied in Tris saline, 0.02% sodium azide, pH 7.3 with 0.5% bovine serum albumin.
CONCENTRATION:	500 ug/mL
STORAGE CONDITIONS:	Aliquot and store at -20°C. Minimize freezing and thawing.
CLONALITY:	Polyclonal
CONJUGATE:	Unconjugated

Additional Info

ALTERNATE NAMES:	SLC2A4, solute carrier family 2 (facilitated glucose transporter), member 4, insulin-responsive glucose transporter type 4, GLUT4, glucose transporter 4
ACCESSION NO.:	NP_001033.1
PROTEIN GI NO.:	4507011

OFFICIAL SYMBOL: SLC2A4

GENE ID: 6517

Background

FOR RESEARCH USE ONLY

December 13, 2016