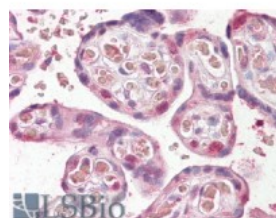




FANCE Antibody

CATALOG NUMBER: 42-799



Immunohistochemistry (3.8ug/ml) staining
of paraffin embedded Human Placenta.
Steamed antigen retrieval with citrate
buffer pH 6, AP-staining.

Specifications

APPLICATIONS:	ELISA: antibody detection limit dilution 1:32000. Western Blot: Preliminary experiments gave an approx 70kDa band in Human Adipose and Uterus lysates after 0.1ug/ml antibody staining. Please note that currently we cannot find an explanation in the literature for the band we observe given the calculated Immunohistochemistry: In paraffin embedded Human Placenta shows nuclear staining in some trophoblasts. Recommended concentration, 3-6ug/ml.
POSITIVE CONTROL:	1) Cat. No. 11048 - Human Adipose Tissue Lysate 2) Cat. No. 1317 - Human Uterus Tissue Lysate
IMMUNOGEN:	FANCE antibody was raised against a 13 amino acid synthetic peptide near the internal region of FANCE.
HOST SPECIES:	Goat

Properties

PURIFICATION:	Antibody was purified from goat serum by ammonium sulphate precipitation followed by antigen affinity chromatography using the immunizing peptide.
PHYSICAL STATE:	Liquid
BUFFER:	FANCE antibody is supplied in Tris saline, 0.02% sodium azide, pH 7.3 with 0.5% bovine serum albumin.
CONCENTRATION:	500 ug/mL
STORAGE CONDITIONS:	Aliquot and store at -20°C. Minimize freezing and thawing.
CLONALITY:	Polyclonal
CONJUGATE:	Unconjugated

Additional Info

ALTERNATE NAMES:	FANCE, Fanconi anemia, complementation group E, FAE, FACE
ACCESSION NO.:	NP_068741.1
PROTEIN GI NO.:	11345454
OFFICIAL SYMBOL:	FANCE
GENE ID:	2178

